

SLC25A12 Rabbit mAb

Catalog No.: A21129 **Recombinant** **1 Publications**

Basic Information

Observed MW

70 kDa

Calculated MW

75 kDa

Category

Primary antibody

Applications

WB,IF-P,IHC-P,IP,ELISA

Cross-Reactivity

Human, Mouse, Rat

CloneNo number

ARC3041

Background

This gene encodes a calcium-binding mitochondrial carrier protein. The encoded protein localizes to the mitochondria and is involved in the exchange of aspartate for glutamate across the inner mitochondrial membrane. Polymorphisms in this gene may be associated with autism, and mutations in this gene may also be a cause of global cerebral hypomyelination. Alternatively spliced transcript variants have been observed for this gene.

Recommended Dilutions

WB	1:500 - 1:1000
IF-P	1:100 - 1:400
IHC-P	1:400 - 1:1600
IP	0.5µg-4µg antibody for 400µg-600µg extracts of whole cells
ELISA	Recommended starting concentration is 1 µg/mL. Please optimize the concentration based on your specific assay requirements.

Contact

☎ | 400-999-6126

✉ | cn.market@abclonal.com.cn

🌐 | www.abclonal.com.cn

Immunogen Information

Gene ID

8604

Swiss Prot

O75746

Immunogen

Recombinant fusion protein containing a sequence corresponding to amino acids 600-678 of human SLC25A12 (NP_003696.2).

Synonyms

AGC1; DEE39; ARALAR; EIEE39; SLC25A12

Product Information

Source

Rabbit

Isotype

IgG

Purification

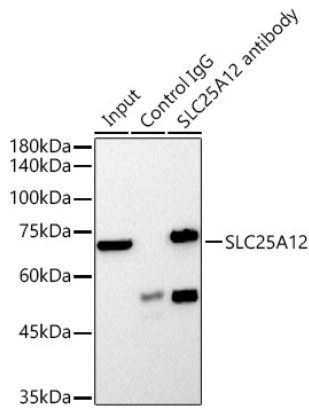
Affinity purification

Storage

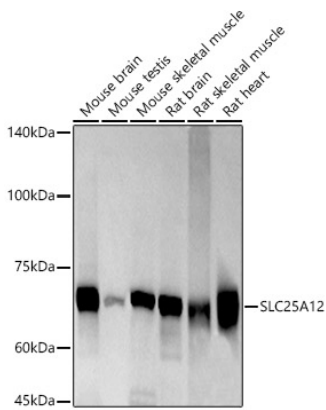
Store at -20°C. Avoid freeze / thaw cycles.

Buffer: PBS containing 50% glycerol and 0.05% BSA, preserved with proclin300 or sodium azide (as specified on the Certificate of Analysis), pH 7.3.

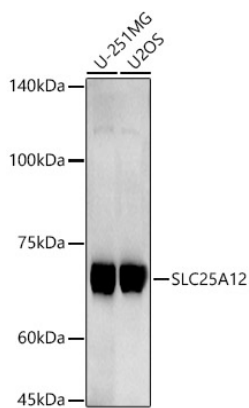
Validation Data



Immunoprecipitation analysis of 600 µg extracts of Mouse brain using 3 µg SLC25A12 antibody (A21129). Western blot was performed from the immunoprecipitate using SLC25A12 antibody (A21129) at a dilution of 1:1000.

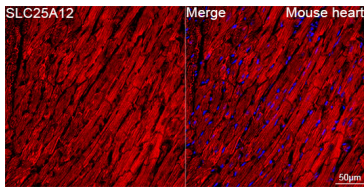


Western blot analysis of various lysates using SLC25A12 Rabbit mAb (A21129) at 1:1000 dilution. Secondary antibody: HRP-conjugated Goat anti-Rabbit IgG (H+L) (AS014) at 1:10000 dilution. Lysates/proteins: 25µg per lane. Blocking buffer: 3% nonfat dry milk in TBST. Detection: ECL Basic Kit (RM00020). Exposure time: 60s.

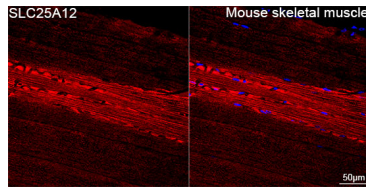


Western blot analysis of various lysates using SLC25A12 Rabbit mAb (A21129) at 1:1000 dilution. Secondary antibody: HRP-conjugated Goat anti-Rabbit IgG (H+L) (AS014) at 1:10000 dilution. Lysates/proteins: 25µg per lane. Blocking buffer: 3% nonfat dry milk in TBST. Detection: ECL Basic Kit (RM00020). Exposure time: 180s.

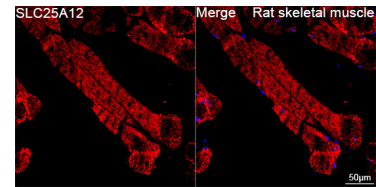
Validation Data



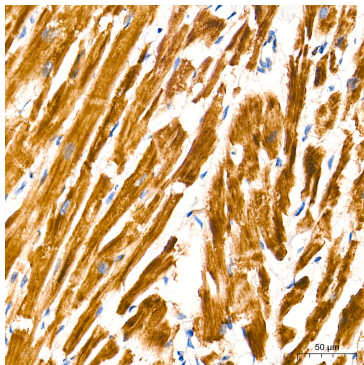
Confocal imaging of paraffin-embedded Mouse heart tissue using SLC25A12 Rabbit mAb (A21129, dilution 1:200) followed by a further incubation with Cy3 Goat Anti-Rabbit IgG (H+L) (AS007, dilution 1:500) (Red). DAPI was used for nuclear staining (Blue). High pressure antigen retrieval performed with 0.01M Citrate Buffer (pH 6.0) prior to IF staining. Objective: 40x.



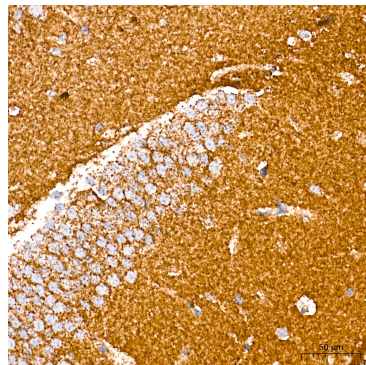
Confocal imaging of paraffin-embedded Mouse skeletal muscle tissue using SLC25A12 Rabbit mAb (A21129, dilution 1:200) followed by a further incubation with Cy3 Goat Anti-Rabbit IgG (H+L) (AS007, dilution 1:500) (Red). DAPI was used for nuclear staining (Blue). High pressure antigen retrieval performed with prior to IF staining. Objective: 40x.



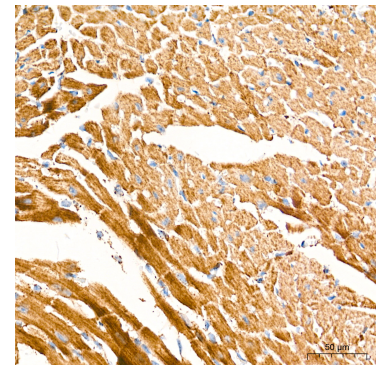
Confocal imaging of paraffin-embedded Rat skeletal muscle tissue using SLC25A12 Rabbit mAb (A21129, dilution 1:200) followed by a further incubation with Cy3 Goat Anti-Rabbit IgG (H+L) (AS007, dilution 1:500) (Red). DAPI was used for nuclear staining (Blue). High pressure antigen retrieval performed with prior to IF staining. Objective: 40x.



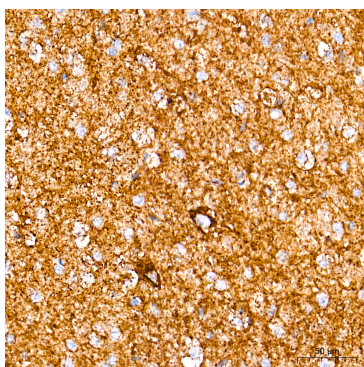
Immunohistochemistry analysis of paraffin-embedded Human heart tissue using SLC25A12 Rabbit mAb (A21129) at a dilution of 1:400 (40x lens). High pressure antigen retrieval performed with 0.01M Tris-EDTA Buffer (pH 9.0) prior to IHC staining.



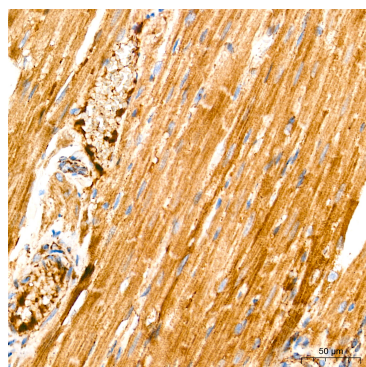
Immunohistochemistry analysis of paraffin-embedded Mouse brain tissue using SLC25A12 Rabbit mAb (A21129) at a dilution of 1:400 (40x lens). High pressure antigen retrieval performed with 0.01M Tris-EDTA Buffer (pH 9.0) prior to IHC staining.



Immunohistochemistry analysis of paraffin-embedded Mouse heart tissue using SLC25A12 Rabbit mAb (A21129) at a dilution of 1:400 (40x lens). High pressure antigen retrieval performed with 0.01M Tris-EDTA Buffer (pH 9.0) prior to IHC staining.



Immunohistochemistry analysis of paraffin-embedded Rat brain tissue using SLC25A12 Rabbit mAb (A21129) at a dilution of 1:400 (40x lens). High pressure antigen retrieval performed with 0.01M Tris-EDTA Buffer (pH 9.0) prior to IHC staining.



Immunohistochemistry analysis of paraffin-embedded Rat heart tissue using SLC25A12 Rabbit mAb (A21129) at a dilution of 1:400 (40x lens). High pressure antigen retrieval performed with 0.01M Tris-EDTA Buffer (pH 9.0) prior to IHC staining.