

NOLC1 Rabbit mAb

Catalog No.: A21134

Recombinant

1 Publications

Basic Information

Observed MW

130kDa

Calculated MW

74kDa

Category

Primary antibody

Applications

WB, IHC-P, IF/ICC, ELISA

Cross-Reactivity

Human, Mouse

CloneNo number

ARC3005

Background

Enables protein heterodimerization activity and protein-macromolecule adaptor activity. Involved in neural crest cell development; neural crest formation; and regulation of translation. Located in fibrillar center.

Recommended Dilutions

WB	1:1000 - 1:6000
IHC-P	1:50 - 1:200
IF/ICC	1:50 - 1:200
ELISA	Recommended starting concentration is 1 µg/mL. Please optimize the concentration based on your specific assay requirements.

Immunogen Information

Gene ID

9221

Swiss Prot

Q14978

Immunogen

Recombinant protein (or fragment). This information is considered to be commercially sensitive.

Synonyms

P130; Srp40; NOPP130; NOPP140; NS5ATP13; NOLC1

Contact

☎	400-999-6126
✉	cn.market@abclonal.com.cn
🌐	www.abclonal.com.cn

Product Information

Source

Rabbit

Isotype

IgG

Purification

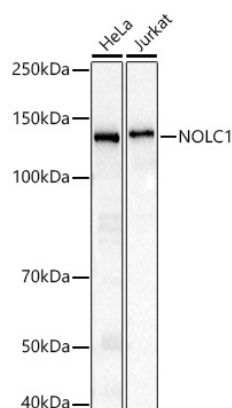
Affinity purification

Storage

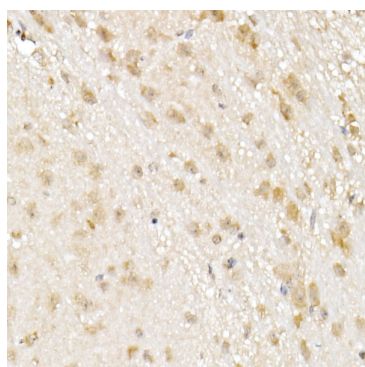
Store at -20°C. Avoid freeze / thaw cycles.

Buffer: PBS with 0.02% sodium azide, 0.05% BSA, 50% glycerol, pH7.3.

Validation Data



Western blot analysis of various lysates using NOLC1 Rabbit mAb (A21134) at 1:1000 dilution.
Secondary antibody: HRP-conjugated Goat anti-Rabbit IgG (H+L) (AS014) at 1:10000 dilution.
Lysates/proteins: 25µg per lane.
Blocking buffer: 3% nonfat dry milk in TBST.
Detection: ECL Basic Kit (RM00020).
Exposure time: 3s.



Immunohistochemistry analysis of paraffin-embedded Mouse brain using NOLC1 Rabbit mAb (A21134) at dilution of 1:100 (40x lens).
High pressure antigen retrieval performed with 0.01M Citrate buffer (pH 6.0) prior to IHC staining.