

# TIM44 Rabbit mAb

Catalog No.: A21141 **Recombinant**

## Basic Information

### Observed MW

45kDa

### Calculated MW

51kDa

### Category

Primary antibody

### Applications

ELISA, WB

### Cross-Reactivity

Human, Rat

### CloneNo number

ARC3044

## Background

This gene encodes a peripheral membrane protein associated with the mitochondrial inner membrane translocase, which functions in the import of proteins across the mitochondrial inner membrane and into the mitochondrial matrix. The encoded protein mediates binding of mitochondrial heat shock protein 70 to the translocase of inner mitochondrial membrane 23 (TIM23) complex. Expression of this gene is upregulated in kidney in a mouse model of diabetes. A mutation in this gene is associated with familial oncocyctic thyroid carcinoma.

## Recommended Dilutions

WB 1:500 - 1:1000

## Immunogen Information

### Gene ID

10469

### Swiss Prot

O43615

### Immunogen

Recombinant fusion protein containing a sequence corresponding to amino acids 10-240 of human TIM44 (NP\_006342.2).

### Synonyms

TIM44

## Contact

 | 400-999-6126

 | [cn.market@abclonal.com.cn](mailto:cn.market@abclonal.com.cn)

 | [www.abclonal.com.cn](http://www.abclonal.com.cn)

## Product Information

### Source

Rabbit

### Isotype

IgG

### Purification

Affinity purification

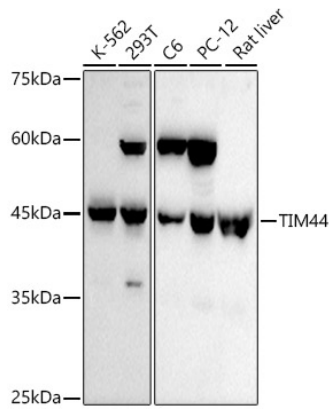
### Storage

Store at -20°C. Avoid freeze / thaw cycles.

Buffer: PBS with 0.02% sodium azide, 0.05% BSA, 50% glycerol, pH7.3.

## Validation Data

---



Western blot analysis of various lysates using TIM44 Rabbit mAb (A21141) at 1:1000 dilution.  
Secondary antibody: HRP Goat Anti-Rabbit IgG (H+L) (AS014) at 1:10000 dilution.  
Lysates/proteins: 25µg per lane.  
Blocking buffer: 3% nonfat dry milk in TBST.  
Detection: ECL Basic Kit (RM00020).  
Exposure time: 90s.