

PWP1 Rabbit mAb

Catalog No.: A21143 **Recombinant**

Basic Information

Observed MW

75kDa

Calculated MW

56kDa

Category

Primary antibody

Applications

ELISA, WB

Cross-Reactivity

Human, Mouse, Rat

CloneNo number

ARC3017

Background

The protein encoded by this gene contains several WD-40 repeats and is found mostly in the nucleus. The expression and localization of this protein are cell cycle dependent. Expression of this gene is upregulated in pancreatic adenocarcinoma. Three transcript variants encoding different isoforms have been found for this gene.

Recommended Dilutions

WB 1:500 - 1:1000

Immunogen Information

Gene ID

11137

Swiss Prot

Q13610

Immunogen

Recombinant fusion protein containing a sequence corresponding to amino acids 460-501 of human PWP1 (NP_008993.1).

Synonyms

NCLB; IEF-SSP-9502; PWP1

Contact

 | 400-999-6126

 | cn.market@abclonal.com.cn

 | www.abclonal.com.cn

Product Information

Source

Rabbit

Isotype

IgG

Purification

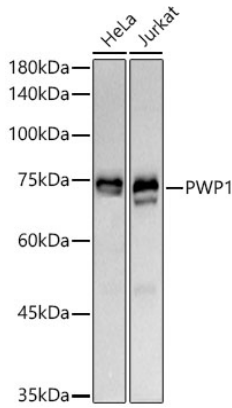
Affinity purification

Storage

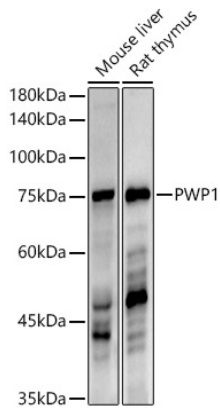
Store at -20°C. Avoid freeze / thaw cycles.

Buffer: PBS with 0.02% sodium azide, 0.05% BSA, 50% glycerol, pH7.3.

Validation Data



Western blot analysis of various lysates using PWP1 Rabbit mAb (A21143) at 1:1000 dilution.
Secondary antibody: HRP Goat Anti-Rabbit IgG (H+L) (AS014) at 1:10000 dilution.
Lysates/proteins: 25µg per lane.
Blocking buffer: 3% nonfat dry milk in TBST.
Detection: ECL Basic Kit (RM00020).
Exposure time: 30s.



Western blot analysis of various lysates using PWP1 Rabbit mAb (A21143) at 1:1000 dilution.
Secondary antibody: HRP Goat Anti-Rabbit IgG (H+L) (AS014) at 1:10000 dilution.
Lysates/proteins: 25µg per lane.
Blocking buffer: 3% nonfat dry milk in TBST.
Detection: ECL Enhanced Kit (RM00021).
Exposure time: 60s.