

PMF1 Rabbit mAb

Catalog No.: A21144 **Recombinant**

Basic Information

Observed MW

23kDa

Calculated MW

23kDa

Category

Primary antibody

Applications

ELISA, WB

Cross-Reactivity

Human, Mouse, Rat

CloneNo number

ARC3037

Background

Enables leucine zipper domain binding activity and transcription coactivator activity. Involved in chromosome segregation. Located in Golgi apparatus; kinetochore; and nucleoplasm. Part of MIS12/MIND type complex. Implicated in bladder carcinoma and urinary bladder cancer.

Recommended Dilutions

WB 1:500 - 1:1000

Immunogen Information

Gene ID

11243

Swiss Prot

Q6P1K2

Immunogen

Recombinant fusion protein containing a sequence corresponding to amino acids 1-205 of human PMF1 (NP_009152.2).

Synonyms

PMF1

Contact

☎ | 400-999-6126

✉ | cn.market@abclonal.com.cn

🌐 | www.abclonal.com.cn

Product Information

Source

Rabbit

Isotype

IgG

Purification

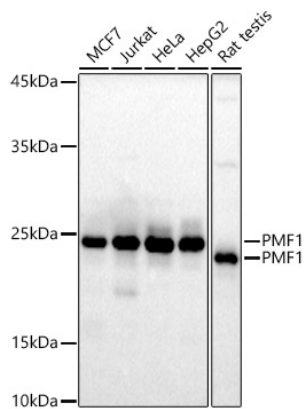
Affinity purification

Storage

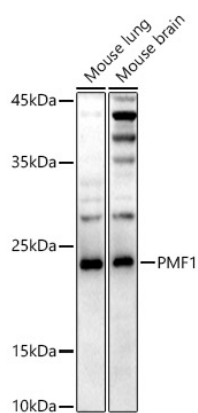
Store at -20°C. Avoid freeze / thaw cycles.

Buffer: PBS with 0.02% sodium azide, 0.05% BSA, 50% glycerol, pH7.3.

Validation Data



Western blot analysis of various lysates using PMF1 Rabbit mAb (A21144) at 1:1000 dilution.
Secondary antibody: HRP Goat Anti-Rabbit IgG (H+L) (AS014) at 1:10000 dilution.
Lysates/proteins: 25µg per lane.
Blocking buffer: 3% nonfat dry milk in TBST.
Detection: ECL Basic Kit (RM00020).
Exposure time: 90s.



Western blot analysis of various lysates using PMF1 Rabbit mAb (A21144) at 1:1000 dilution.
Secondary antibody: HRP Goat Anti-Rabbit IgG (H+L) (AS014) at 1:10000 dilution.
Lysates/proteins: 25µg per lane.
Blocking buffer: 3% nonfat dry milk in TBST.
Detection: ECL Enhanced Kit (RM00021).
Exposure time: 180s.