

# CD147 Rabbit mAb

Catalog No.: A21147 **Recombinant**

## Basic Information

### Observed MW

38-58kDa

### Calculated MW

42kDa

### Category

Primary antibody

### Applications

ELISA, WB, IHC-P

### Cross-Reactivity

Mouse

### CloneNo number

ARC3054

## Background

Predicted to enable cell-cell adhesion mediator activity; signaling receptor activity; and virus receptor activity. Involved in neural retina development; photoreceptor cell maintenance; and spermatogenesis. Located in several cellular components, including acrosomal membrane; photoreceptor inner segment; and photoreceptor outer segment. Is expressed in several structures, including alimentary system; brain; early conceptus; reproductive system; and sensory organ. Orthologous to human BSG (basigin (Ok blood group)).

## Recommended Dilutions

**WB** 1:500 - 1:1000

**IHC-P** 1:50 - 1:200

## Immunogen Information

### Gene ID

12215

### Swiss Prot

P18572

### Immunogen

Recombinant fusion protein containing a sequence corresponding to amino acids 141-302 of mouse CD147 (NP\_033898.1).

### Synonyms

HT-7; CD147; EMMPRIN

## Contact

☎ | 400-999-6126

✉ | [cn.market@abclonal.com.cn](mailto:cn.market@abclonal.com.cn)

🌐 | [www.abclonal.com.cn](http://www.abclonal.com.cn)

## Product Information

### Source

Rabbit

### Isotype

IgG

### Purification

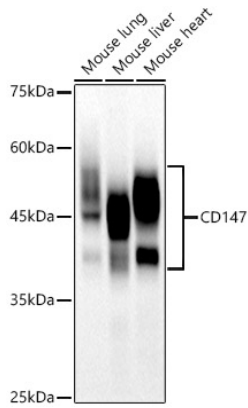
Affinity purification

### Storage

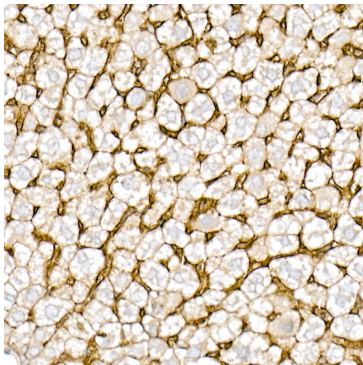
Store at -20°C. Avoid freeze / thaw cycles.

Buffer: PBS with 0.02% sodium azide, 0.05% BSA, 50% glycerol, pH7.3.

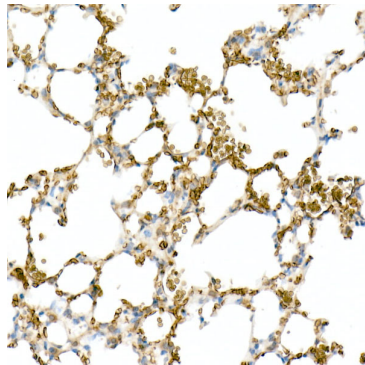
## Validation Data



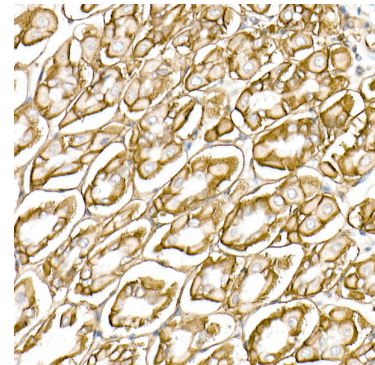
Western blot analysis of various lysates using CD147 Rabbit mAb (A21147) at 1:1000 dilution. Secondary antibody: HRP Goat Anti-Rabbit IgG (H+L) (AS014) at 1:10000 dilution. Lysates/proteins: 25µg per lane. Blocking buffer: 3% nonfat dry milk in TBST. Detection: ECL Basic Kit (RM00020). Exposure time: 25s.



Immunohistochemistry analysis of paraffin-embedded mouse liver using CD147 Rabbit mAb (A21147) at dilution of 1:100(40x lens). Perform high pressure antigen retrieval with 10 mM citrate buffer pH 6.0 before commencing with IHC staining protocol.



Immunohistochemistry analysis of paraffin-embedded mouse lung using CD147 Rabbit mAb (A21147) at dilution of 1:100(40x lens). Perform high pressure antigen retrieval with 10 mM citrate buffer pH 6.0 before commencing with IHC staining protocol.



Immunohistochemistry analysis of paraffin-embedded mouse stomach using CD147 Rabbit mAb (A21147) at dilution of 1:100(40x lens). Perform high pressure antigen retrieval with 10 mM citrate buffer pH 6.0 before commencing with IHC staining protocol.