

CLIC4 Rabbit mAb

Catalog No.: A21149

Recombinant

1 Publications

Basic Information

Observed MW

28kDa

Calculated MW

29kDa

Category

Primary antibody

Applications

ELISA, WB

Cross-Reactivity

Human, Mouse, Rat

CloneNo number

ARC2998

Background

Chloride channels are a diverse group of proteins that regulate fundamental cellular processes including stabilization of cell membrane potential, transepithelial transport, maintenance of intracellular pH, and regulation of cell volume. Chloride intracellular channel 4 (CLIC4) protein, encoded by the CLIC4 gene, is a member of the p64 family; the gene is expressed in many tissues and exhibits an intracellular vesicular pattern in Panc-1 cells (pancreatic cancer cells).

Recommended Dilutions

WB 1:100 - 1:500

Immunogen Information

Gene ID

25932

Swiss Prot

Q9Y696

Immunogen

Recombinant fusion protein containing a sequence corresponding to amino acids 1-100 of human CLIC4 (NP_039234.1).

Synonyms

H1; huH1; p64H1; CLIC4L; MTCLIC; CLIC4

Contact

☎ | 400-999-6126

✉ | cn.market@abclonal.com.cn

🌐 | www.abclonal.com.cn

Product Information

Source

Rabbit

Isotype

IgG

Purification

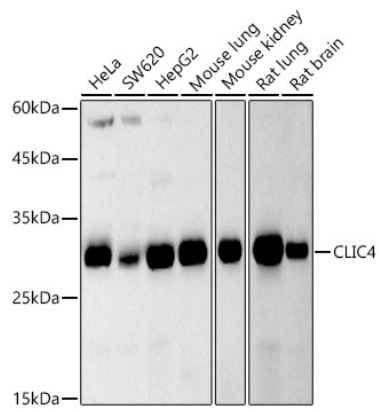
Affinity purification

Storage

Store at -20°C. Avoid freeze / thaw cycles.

Buffer: PBS with 0.02% sodium azide, 0.05% BSA, 50% glycerol, pH7.3.

Validation Data



Western blot analysis of various lysates, using CLIC4 Rabbit mAb (A21149) at 1:500 dilution.
Secondary antibody: HRP Goat Anti-Rabbit IgG (H+L) (AS014) at 1:10000 dilution.
Lysates/proteins: 25µg per lane.
Blocking buffer: 3% nonfat dry milk in TBST.
Detection: ECL Basic Kit (RM00020).
Exposure time: 90s.