

Serine racemase Rabbit mAb

Catalog No.: A21158 **Recombinant**

Basic Information

Observed MW

37kDa

Calculated MW

37kDa

Category

Primary antibody

Applications

ELISA, WB

Cross-Reactivity

Human

CloneNo number

ARC3047

Background

Enables several functions, including L-serine ammonia-lyase activity; PDZ domain binding activity; and anion binding activity. Involved in pyruvate biosynthetic process; response to lipopolysaccharide; and serine family amino acid metabolic process. Located in cytoplasm and neuronal cell body.

Recommended Dilutions

WB 1:500 - 1:1000

Immunogen Information

Gene ID

63826

Swiss Prot

Q9GZT4

Immunogen

Recombinant fusion protein containing a sequence corresponding to amino acids 1-100 of human Serine racemase (NP_068766.1).

Synonyms

ILV1; ISO1; Serine racemase

Contact

☎ | 400-999-6126

✉ | cn.market@abclonal.com.cn

🌐 | www.abclonal.com.cn

Product Information

Source

Rabbit

Isotype

IgG

Purification

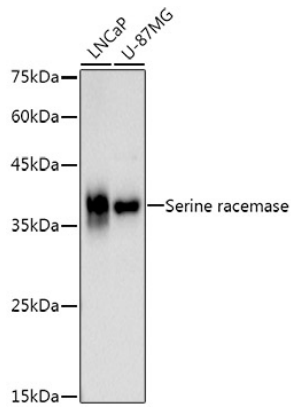
Affinity purification

Storage

Store at -20°C. Avoid freeze / thaw cycles.

Buffer: PBS with 0.02% sodium azide, 0.05% BSA, 50% glycerol, pH7.3.

Validation Data



Western blot analysis of various lysates using Serine racemase Rabbit mAb (A21158) at 1:1000 dilution.
Secondary antibody: HRP Goat Anti-Rabbit IgG (H+L) (AS014) at 1:10000 dilution.
Lysates/proteins: 25µg per lane.
Blocking buffer: 3% nonfat dry milk in TBST.
Detection: ECL Basic Kit (RM00020).
Exposure time: 90s.