

# TMEM192 Rabbit mAb

Catalog No.: A21165 **Recombinant**

## Basic Information

### Observed MW

31kDa

### Calculated MW

31kDa

### Category

Primary antibody

### Applications

ELISA, WB

### Cross-Reactivity

Human, Rat

### CloneNo number

ARC2978

## Background

Enables protein homodimerization activity. Located in several cellular components, including late endosome; lysosomal membrane; and perinuclear region of cytoplasm.

## Recommended Dilutions

**WB** 1:500 - 1:1000

## Immunogen Information

### Gene ID

201931

### Swiss Prot

Q8IY95

### Immunogen

Recombinant fusion protein containing a sequence corresponding to amino acids 1-271 of human TMEM192 (NP\_001093859.1).

### Synonyms

## Contact

 | 400-999-6126

 | [cn.market@abclonal.com.cn](mailto:cn.market@abclonal.com.cn)

 | [www.abclonal.com.cn](http://www.abclonal.com.cn)

## Product Information

### Source

Rabbit

### Isotype

IgG

### Purification

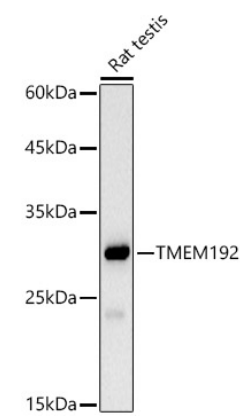
Affinity purification

### Storage

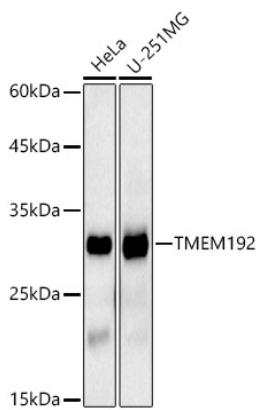
Store at -20°C. Avoid freeze / thaw cycles.

Buffer: PBS with 0.02% sodium azide, 0.05% BSA, 50% glycerol, pH7.3.

Validation Data



Western blot analysis of lysates from rat testis, using TMEM192 Rabbit mAb (A21165) at 1:1000 dilution. Secondary antibody: HRP Goat Anti-Rabbit IgG (H+L) (AS014) at 1:10000 dilution. Lysates/proteins: 25ug per lane. Blocking buffer: 3% nonfat dry milk in TBST. Detection: ECL Basic Kit (RM00020). Exposure time: 30s.



Western blot analysis of various lysates using TMEM192 Rabbit mAb (A21165) at 1:1000 dilution. Secondary antibody: HRP Goat Anti-Rabbit IgG (H+L) (AS014) at 1:10000 dilution. Lysates/proteins: 25ug per lane. Blocking buffer: 3% nonfat dry milk in TBST. Detection: ECL Basic Kit (RM00020). Exposure time: 180s.