

# SMG1 Rabbit pAb

Catalog No.: A21169

## Basic Information

### Observed MW

Refer to figures

### Calculated MW

411kDa

### Category

Primary antibody

### Applications

ELISA,IF/ICC

### Cross-Reactivity

Human, Mouse, Rat

## Background

This gene encodes a protein involved in nonsense-mediated mRNA decay (NMD) as part of the mRNA surveillance complex. The protein has kinase activity and is thought to function in NMD by phosphorylating the regulator of nonsense transcripts 1 protein. Alternatively spliced transcript variants have been described, but their full-length nature has yet to be determined.

## Recommended Dilutions

IF/ICC 1:50 - 1:200

## Immunogen Information

### Gene ID

23049

### Swiss Prot

Q96Q15

### Immunogen

A synthetic peptide corresponding to a sequence within amino acids 1-100 of human SMG1 (NP\_055907.3).

### Synonyms

ATX; LIP; 61E3.4; SMG1

## Contact

 | 400-999-6126

 | [cn.market@abclonal.com.cn](mailto:cn.market@abclonal.com.cn)

 | [www.abclonal.com.cn](http://www.abclonal.com.cn)

## Product Information

### Source

Rabbit

### Isotype

IgG

### Purification

Affinity purification

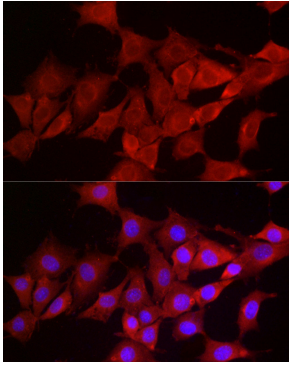
### Storage

Store at -20°C. Avoid freeze / thaw cycles.

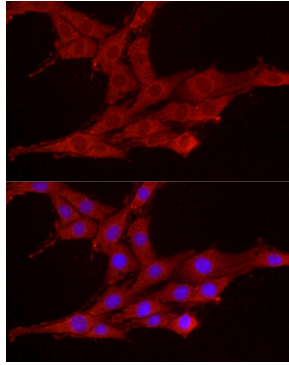
Buffer: PBS with 0.05% proclin300,50% glycerol,pH7.3.

## Validation Data

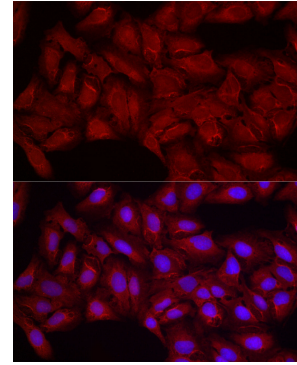
---



Immunofluorescence analysis of NIH/3T3 cells using SMG1 Rabbit pAb (A21169) at dilution of 1:200 (40x lens). Blue: DAPI for nuclear staining.



Immunofluorescence analysis of PC-12 cells using SMG1 Rabbit pAb (A21169) at dilution of 1:200 (40x lens). Blue: DAPI for nuclear staining.



Immunofluorescence analysis of U2OS cells using SMG1 Rabbit pAb (A21169) at dilution of 1:200 (40x lens). Blue: DAPI for nuclear staining.