

Siglec-8 Rabbit mAb

Catalog No.: A21172 **Recombinant**

Basic Information

Observed MW

60kDa

Calculated MW

54kDa

Category

Primary antibody

Applications

ELISA,WB,FC

Cross-Reactivity

Human, Mouse, Rat

CloneNo number

ARC52425

Background

Sialic acid-binding immunoglobulin (Ig)-like lectins, or SIGLECs (e.g., CD33 (MIM 159590)), are a family of type 1 transmembrane proteins each having a unique expression pattern, mostly in hemopoietic cells. SIGLEC8 is a member of the CD33-like subgroup of SIGLECs, which are localized to 19q13.3-q13.4 and have 2 conserved cytoplasmic tyrosine-based motifs: an immunoreceptor tyrosine-based inhibitory motif, or ITIM (see MIM 604964), and a motif homologous to one identified in signaling lymphocyte activation molecule (SLAM; MIM 603492) that mediates an association with SLAM-associated protein (SAP; MIM 300490) (summarized by Foussias et al., 2000 [PubMed 11095983]).

Recommended Dilutions

WB	1:1000 - 1:5000
FC	1:50 - 1:100

Immunogen Information

Gene ID

27181

Swiss Prot

Q9NYZ4

Immunogen

Recombinant fusion protein containing a sequence corresponding to amino acids 17-363 of human Siglec-8 (NP_055257.2).

Synonyms

SAF2; SIGLEC-8; SIGLEC8L; SIGLEC8; Siglec-8

Contact

☎ | 400-999-6126

✉ | cn.market@abclonal.com.cn

🌐 | www.abclonal.com.cn

Product Information

Source

Rabbit

Isotype

IgG

Purification

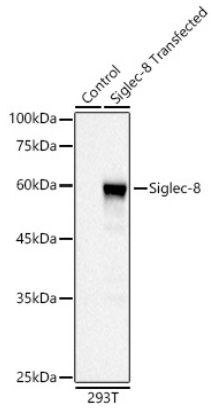
Affinity purification

Storage

Store at -20°C. Avoid freeze / thaw cycles.

Buffer: PBS with 0.05% proclin300,0.05% BSA,50% glycerol,pH7.3.

Validation Data



Western blot analysis of lysates from wild type (WT) and 293T cells transfected with Siglec-8 using Siglec-8 Rabbit mAb (A21172) at 1:2000 dilution.

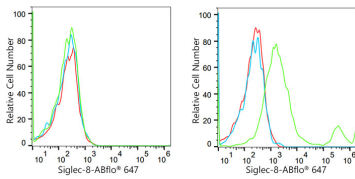
Secondary antibody: HRP Goat Anti-Rabbit IgG (H+L) (AS014) at 1:10000 dilution.

Lysates/proteins: 25 µg per lane.

Blocking buffer: 3% nonfat dry milk in TBST.

Detection: ECL Basic Kit (RM00020).

Exposure time: 90s.



Flow cytometry: 1×10^6 293F cells (negative control, left) and 293F (Transfection, right) cells were surface-stained with Siglec-8 Rabbit mAb (A21172, 10 µg/mL, green line) or Rabbit IgG isotype control (AC042, 10 µg/mL, blue line), followed by Alexa Fluor 647 conjugated goat anti-rabbit pAb (1:600 dilution) staining. Non-fluorescently stained cells were used as blank control (red line).