

Phospho-POLR2A CTD-T4 Rabbit pAb

Catalog No.: A21190

Basic Information

Observed MW

250kDa

Calculated MW

217kDa

Category

Primary antibody

Applications

WB,IP,ELISA,ChIP

Cross-Reactivity

Human, Mouse, Rat

Background

This gene encodes the largest subunit of RNA polymerase II, the polymerase responsible for synthesizing messenger RNA in eukaryotes. The product of this gene contains a carboxy terminal domain composed of heptapeptide repeats that are essential for polymerase activity. These repeats contain serine and threonine residues that are phosphorylated in actively transcribing RNA polymerase. In addition, this subunit, in combination with several other polymerase subunits, forms the DNA binding domain of the polymerase, a groove in which the DNA template is transcribed into RNA.

Recommended Dilutions

WB 1:500 - 1:1000

IP 0.5µg-4µg antibody for
200µg-400µg extracts of
whole cells

ELISA Recommended starting
concentration is 1 µg/mL.
Please optimize the
concentration based on
your specific assay
requirements.

ChIP 5µg antibody for
10µg-15µg of Chromatin

Immunogen Information

Gene ID

5430

Swiss Prot

P24928

Immunogen

A phospho specific peptide corresponding to residues surrounding T4 of human POLR2A CTD repeat YSPTSPS.

Synonyms

RPB1; RPO2; POLR2; POLRA; RPBh1; RPOL2; NEDHIB; RpIILS; hsRPB1; hRPB220; Phospho-POLR2A CTD-T4

Product Information

Source

Rabbit

Isotype

IgG

Purification

Affinity purification

Storage

Store at -20°C. Avoid freeze / thaw cycles.

Buffer: PBS with 0.05% proclin300,50% glycerol,pH7.3.

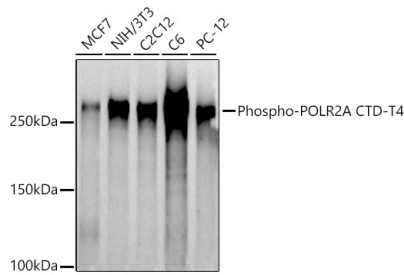
Contact

☎ | 400-999-6126

✉ | cn.market@abclonal.com.cn

🌐 | www.abclonal.com.cn

Validation Data



Western blot analysis of various lysates using Phospho-POLR2A CTD-T4 Rabbit pAb (A21190) at 1:1000 dilution.

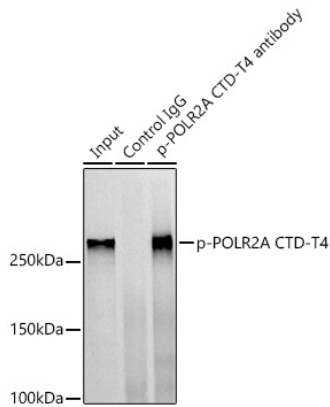
Secondary antibody: HRP-conjugated Goat anti-Rabbit IgG (H+L) (AS014) at 1:10000 dilution.

Lysates/proteins: 25µg per lane.

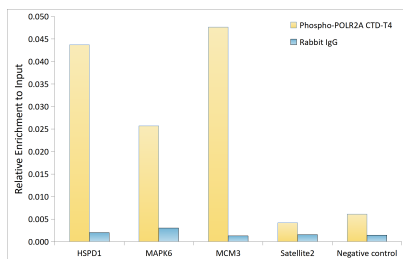
Blocking buffer: 3% nonfat dry milk in TBST.

Detection: ECL Basic Kit (RM00020).

Exposure time: 90s.



Immunoprecipitation analysis of 300 µg extracts of C6 cells using 3 µg Phospho-POLR2A CTD-T4 antibody (A21190). Western blot was performed from the immunoprecipitate using Phospho-POLR2A (Thr4) antibody (A21190) at a dilution of 1:1000.



Chromatin immunoprecipitation analysis of extracts of 293T cells, using Phospho-POLR2A CTD-T4 antibody (A21190) and rabbit IgG. The amount of immunoprecipitated DNA was checked by quantitative PCR. Histogram was constructed by the ratios of the immunoprecipitated DNA to the input.