

[KO Validated] Beclin 1 Rabbit mAb

Catalog No.: A21191

KO Validated

Recombinant

16 Publications

Basic Information

Observed MW

60kDa

Calculated MW

52kDa

Category

Primary antibody

Applications

WB, IF/ICC, ELISA

Cross-Reactivity

Human, Mouse, Rat

CloneNo number

ARC52856

Background

This gene encodes a protein that regulates autophagy, a catabolic process of degradation induced by starvation. The encoded protein is a component of the phosphatidylinositol-3-kinase (PI3K) complex which mediates vesicle-trafficking processes. This protein is thought to play a role in multiple cellular processes, including tumorigenesis, neurodegeneration and apoptosis. Alternative splicing results in multiple transcript variants.

Recommended Dilutions

WB 1:2000 - 1:10000**IF/ICC** 1:50 - 1:200

ELISA Recommended starting concentration is 1 µg/mL. Please optimize the concentration based on your specific assay requirements.

Immunogen Information

Gene ID

8678

Swiss Prot

Q14457

Immunogen

Recombinant protein (or fragment). This information is considered to be commercially sensitive.

Synonyms

ATG6; VPS30; beclin1; Beclin 1; BECN1; beclin-1; 1

Contact

 | 400-999-6126 | cn.market@abclonal.com.cn | www.abclonal.com.cn

Product Information

Source

Rabbit

Isotype

IgG

Purification

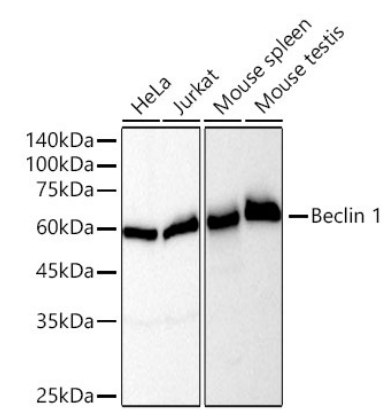
Affinity purification

Storage

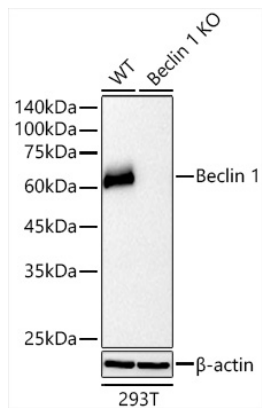
Store at -20°C. Avoid freeze / thaw cycles.

Buffer: PBS containing 50% glycerol and 0.05% BSA, preserved with proclin300 or sodium azide (as specified on the Certificate of Analysis), pH 7.3.

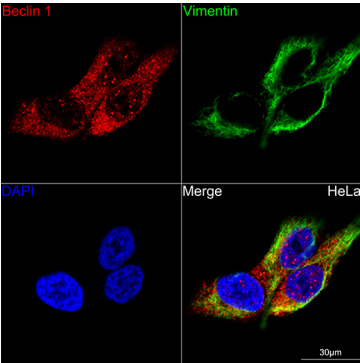
Validation Data



Western blot analysis of various lysates using [KO Validated] Beclin 1 Rabbit mAb (A21191) at 1:12000 dilution incubated overnight at 4°C.
Secondary antibody: HRP-conjugated Goat anti-Rabbit IgG (H+L) (AS014) at 1:10000 dilution.
Lysates/proteins: 25 µg per lane.
Blocking buffer: 3% nonfat dry milk in TBST.
Detection: ECL Basic Kit (RM00020).
Exposure time: 30s.



Western blot analysis of lysates from wild type (WT) and Beclin 1 knockout (KO) 293T cells using [KO Validated] Beclin 1 Rabbit mAb (A21191) at 1:12000 dilution incubated overnight at 4°C.
Secondary antibody: HRP-conjugated Goat anti-Rabbit IgG (H+L) (AS014) at 1:10000 dilution.
Lysates/proteins: 25 µg per lane.
Blocking buffer: 3% nonfat dry milk in TBST.
Detection: ECL Basic Kit (RM00020).
Exposure time: 30s.



Confocal imaging of HeLa cells using [KO Validated] Beclin 1 Rabbit mAb (A21191, dilution 1:100) (Red). The cells were counterstained with [KO Validated] Vimentin Rabbit mAb (A19607, dilution 1:100) (Green). DAPI was used for nuclear staining (blue). Objective: 60x.