

TOM70 Rabbit mAb

Catalog No.: A21210 **Recombinant** **1 Publications**

Basic Information

Observed MW

75kDa

Calculated MW

67kDa

Category

Primary antibody

Applications

WB, ELISA

Cross-Reactivity

Human, Mouse, Rat

CloneNo number

ARC53258

Background

This gene encodes an import receptor of the outer mitochondrial membrane that is part of the translocase of the outer membrane complex. This protein is involved in the import of mitochondrial precursor proteins. The protein interacts with the SARS-CoV and SARS-Cov-2 ORF9b proteins.

Recommended Dilutions

WB 1:1000 - 1:5000

ELISA Recommended starting concentration is 1 µg/mL. Please optimize the concentration based on your specific assay requirements.

Immunogen Information

Gene ID

9868

Swiss Prot

O94826

Immunogen

Recombinant protein (or fragment). This information is considered to be commercially sensitive.

Synonyms

Tom70; TOMM70A; TOM70

Contact

 | 400-999-6126

 | cn.market@abclonal.com.cn

 | www.abclonal.com.cn

Product Information

Source

Rabbit

Isotype

IgG

Purification

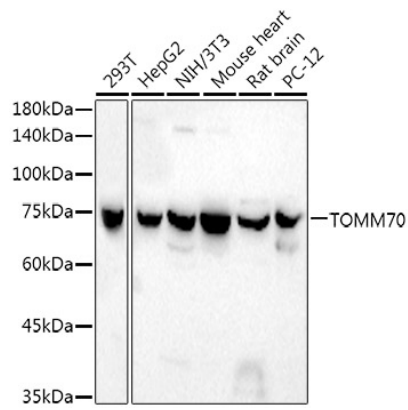
Affinity purification

Storage

Store at -20°C. Avoid freeze / thaw cycles.

Buffer: PBS containing 50% glycerol and 0.05% BSA, preserved with proclin300 or sodium azide (as specified on the Certificate of Analysis), pH 7.3.

Validation Data



Western blot analysis of various lysates using TOM70 Rabbit mAb (A21210) at 1:1800 dilution.
Secondary antibody: HRP-conjugated Goat anti-Rabbit IgG (H+L) (AS014) at 1:10000 dilution.
Lysates/proteins: 25µg per lane.
Blocking buffer: 3% nonfat dry milk in TBST.
Detection: ECL Basic Kit (RM00020).
Exposure time: 90s.