

# PHD3 Rabbit mAb

Catalog No.: A21225 **Recombinant** **1 Publications**

## Basic Information

### Observed MW

32kDa

### Calculated MW

27kDa

### Category

Primary antibody

### Applications

ELISA, WB, IHC-P, IF/ICC

### Cross-Reactivity

Human, Mouse, Rat

### CloneNo number

ARC52452

## Background

Enables peptidyl-proline 4-dioxygenase activity. Involved in several processes, including activation of cysteine-type endopeptidase activity involved in apoptotic process; peptidyl-proline hydroxylation to 4-hydroxy-L-proline; and response to hypoxia. Located in cytosol and nucleus. Implicated in renal cell carcinoma. Biomarker of clear cell renal cell carcinoma.

## Recommended Dilutions

<b>WB</b>	1:2000 - 20000
<b>IHC-P</b>	1:500 - 1:1000
<b>IF/ICC</b>	1:50 - 1:200

## Immunogen Information

### Gene ID

112399

### Swiss Prot

Q9H6Z9

### Immunogen

A synthetic peptide corresponding to a sequence within amino acids 1-100 of human PHD3 (NP\_071356.1).

### Synonyms

PHD3; HIFPH3; HIFP4H3

## Contact

☎ | 400-999-6126

✉ | [cn.market@abclonal.com.cn](mailto:cn.market@abclonal.com.cn)

🌐 | [www.abclonal.com.cn](http://www.abclonal.com.cn)

## Product Information

### Source

Rabbit

### Isotype

IgG

### Purification

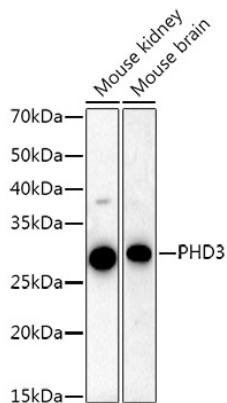
Affinity purification

### Storage

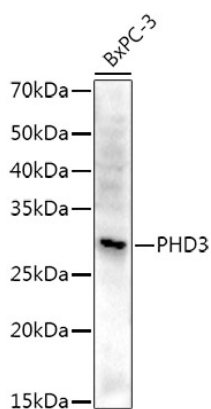
Store at -20°C. Avoid freeze / thaw cycles.

Buffer: PBS with 0.05% proclin300, 0.05% BSA, 50% glycerol, pH7.3.

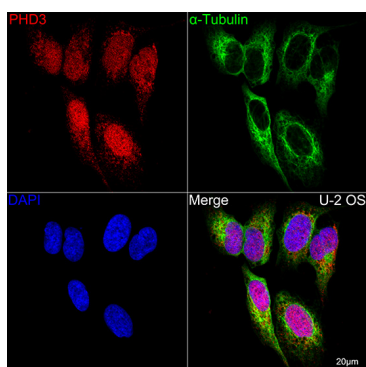
## Validation Data



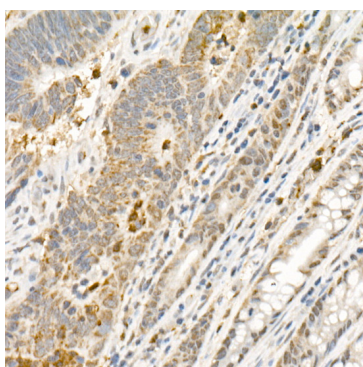
Western blot analysis of various lysates using PHD3 Rabbit mAb (A21225) at 1:20000 dilution. Secondary antibody: HRP Goat Anti-Rabbit IgG (H+L) (AS014) at 1:10000 dilution. Lysates/proteins: 25µg per lane. Blocking buffer: 3% nonfat dry milk in TBST. Detection: ECL Basic Kit (RM00020). Exposure time: 60s.



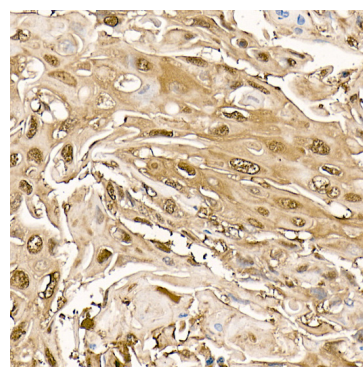
Western blot analysis of lysates from BxPC-3 cells, using PHD3 Rabbit mAb (A21225) at 1:20000 dilution. Secondary antibody: HRP Goat Anti-Rabbit IgG (H+L) (AS014) at 1:10000 dilution. Lysates/proteins: 25µg per lane. Blocking buffer: 3% nonfat dry milk in TBST. Detection: ECL Basic Kit (RM00020). Exposure time: 90s.



Confocal imaging of U-2 OS cells using PHD3 Rabbit mAb (A21225, dilution 1:200) (Red). The cells were counterstained with  $\alpha$ -Tubulin Mouse mAb (AC012, dilution 1:400) (Green). DAPI was used for nuclear staining (blue). Objective: 60x.



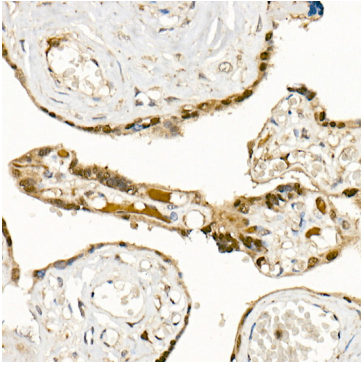
Immunohistochemistry analysis of paraffin-embedded human colon carcinoma using PHD3 Rabbit mAb (A21225) at dilution of 1:1000 (40x lens). Perform high pressure antigen retrieval with 10 mM citrate buffer pH 6.0 before commencing with IHC staining protocol.



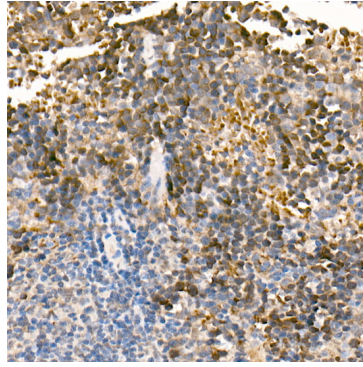
Immunohistochemistry analysis of paraffin-embedded human esophageal cancer using PHD3 Rabbit mAb (A21225) at dilution of 1:1000 (40x lens). Perform high pressure antigen retrieval with 10 mM citrate buffer pH 6.0 before commencing with IHC staining protocol.

## Validation Data

---



Immunohistochemistry analysis of paraffin-embedded human placenta using PHD3 Rabbit mAb (A21225) at dilution of 1:1000 (40x lens). Perform high pressure antigen retrieval with 10 mM citrate buffer pH 6.0 before commencing with IHC staining protocol.



Immunohistochemistry analysis of paraffin-embedded mouse spleen using PHD3 Rabbit mAb (A21225) at dilution of 1:1000 (40x lens). Perform high pressure antigen retrieval with 10 mM citrate buffer pH 6.0 before commencing with IHC staining protocol.