

# SLR1 Rabbit mAb

Catalog No.: A21231 **Recombinant**

## Basic Information

### Observed MW

65kDa

### Calculated MW

65kDa

### Category

Primary antibody

### Applications

ELISA, WB

### Cross-Reactivity

Oryza sativa, Other (Wide Range Predicted)

### CloneNo number

ARC5125-02

## Background

Probable transcriptional regulator that acts as a repressor of the gibberellin (GA) signaling pathway. Probably acts by participating in large multiprotein complexes that repress transcription of GA-inducible genes. Upon GA application, it is degraded by the proteasome, allowing the GA signaling pathway. In contrast, its overexpression prevents the GA signaling pathway and induces a dwarf phenotype.

## Recommended Dilutions

WB 1:500 - 1:1000

## Immunogen Information

### Gene ID

4333860

### Swiss Prot

Q7G7J6

### Immunogen

Recombinant protein of Oryza sativa SLR1.

### Synonyms

GAI; SLR1; OsGAI; OsJ\_12286

## Contact

☎ | 400-999-6126

✉ | [cn.market@abclonal.com.cn](mailto:cn.market@abclonal.com.cn)

🌐 | [www.abclonal.com.cn](http://www.abclonal.com.cn)

## Product Information

### Source

Rabbit

### Isotype

IgG

### Purification

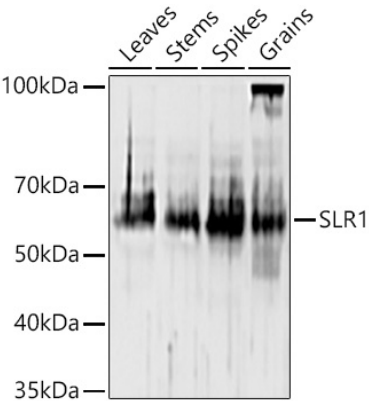
Affinity purification

### Storage

Store at -20°C. Avoid freeze / thaw cycles.

Buffer: PBS with 0.05% proclin300, 0.05% BSA, 50% glycerol, pH7.3.

Validation Data



Western blot analysis of extracts of various tissues from *Oryza sativa*, using SLR1 Rabbit mAb (A21231) at 1:1000 dilution.  
Secondary antibody: HRP Goat Anti-Rabbit IgG (H+L) (AS014) at 1:10000 dilution.  
Lysates/proteins: 25µg per lane.  
Blocking buffer: 3% nonfat dry milk in TBST.  
Detection: ECL Basic Kit (RM00020).  
Exposure time: 10s.