

# COX7A1 Rabbit mAb

Catalog No.: A21240 **Recombinant**

## Basic Information

**Observed MW**

9kDa

**Calculated MW**

9kDa

**Category**

Primary antibody

**Applications**

ELISA, WB, IHC-P, IF/ICC

**Cross-Reactivity**

Human, Mouse, Rat

**CloneNo number**

ARC53426

## Background

Cytochrome c oxidase (COX), the terminal component of the mitochondrial respiratory chain, catalyzes the electron transfer from reduced cytochrome c to oxygen. This component is a heteromeric complex consisting of 3 catalytic subunits encoded by mitochondrial genes and multiple structural subunits encoded by nuclear genes. The mitochondrially-encoded subunits function in electron transfer, and the nuclear-encoded subunits may function in the regulation and assembly of the complex. This nuclear gene encodes polypeptide 1 (muscle isoform) of subunit VIIa and the polypeptide 1 is present only in muscle tissues. Other polypeptides of subunit VIIa are present in both muscle and nonmuscle tissues, and are encoded by different genes.

## Recommended Dilutions

<b>WB</b>	1:2000 - 1:20000
<b>IHC-P</b>	1:2000 - 1:6000
<b>IF/ICC</b>	1:50 - 1:200

## Immunogen Information

**Gene ID**

1346

**Swiss Prot**

P24310

**Immunogen**

A synthetic peptide corresponding to a sequence within amino acids 1-79 of human COX7A1 (NP\_001855.1).

**Synonyms**

COX7A; COX7AH; COX7AM; COX7A1

## Contact

 | 400-999-6126 | [cn.market@abclonal.com.cn](mailto:cn.market@abclonal.com.cn) | [www.abclonal.com.cn](http://www.abclonal.com.cn)

## Product Information

**Source**

Rabbit

**Isotype**

IgG

**Purification**

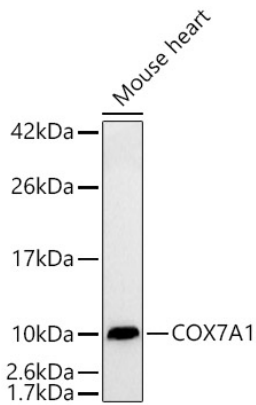
Affinity purification

**Storage**

Store at -20°C. Avoid freeze / thaw cycles.

Buffer: PBS with 0.05% proclin300, 0.05% BSA, 50% glycerol, pH7.3.

## Validation Data



Western blot analysis of lysates from Mouse heart, using COX7A1 Rabbit mAb (A21240) at 1:20000 dilution.

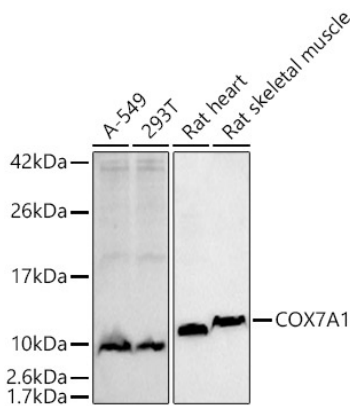
Secondary antibody: HRP Goat Anti-Rabbit IgG (H+L) (AS014) at 1:10000 dilution.

Lysates/proteins: 25µg per lane.

Blocking buffer: 3% nonfat dry milk in TBST.

Detection: ECL Basic Kit (RM00020).

Exposure time: 30s.



Western blot analysis of various lysates, using COX7A1 Rabbit mAb (A21240) at 1:20000 dilution.

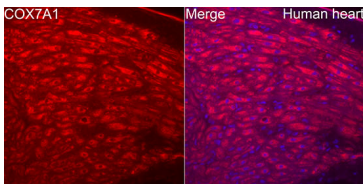
Secondary antibody: HRP Goat Anti-Rabbit IgG (H+L) (AS014) at 1:10000 dilution.

Lysates/proteins: 25µg per lane.

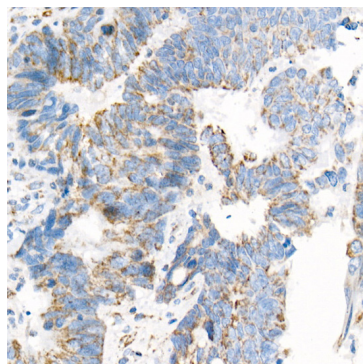
Blocking buffer: 3% nonfat dry milk in TBST.

Detection: ECL Enhanced Kit (RM00021).

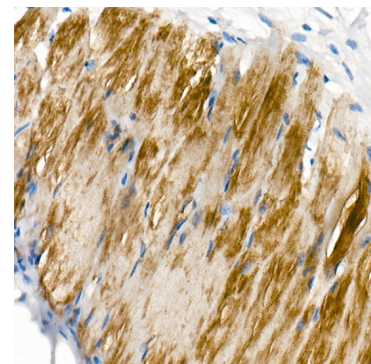
Exposure time: 90s.



Confocal imaging of Human heart using COX7A1 Rabbit mAb(A21240, 1:100)(Red).DAPI was used for nuclear staining(blue).Objective:40x.



Immunohistochemistry analysis of paraffin-embedded human colon carcinoma using COX7A1 Rabbit mAb (A21240) at dilution of 1:5000 (40x lens).Perform high pressure antigen retrieval with 10 mM citrate buffer pH 6.0 before commencing with IHC staining protocol.



Immunohistochemistry analysis of paraffin-embedded Human skeletal muscle using COX7A1 Rabbit mAb (A21240) at dilution of 1:5000 (40x lens).Perform high pressure antigen retrieval with 10 mM citrate buffer pH 6.0 before commencing with IHC staining protocol.