

ABI5 Rabbit pAb

Catalog No.: A21249 **1 Publications**

Basic Information

Observed MW

50kDa

Calculated MW

47kDa

Category

Primary antibody

Applications

ELISA, WB

Cross-Reactivity

Arabidopsis thaliana

Background

Encodes a member of the basic leucine zipper transcription factor family, involved in ABA signalling during seed maturation and germination. The Arabidopsis abscisic acid (ABA)-insensitive *abi5* mutants have pleiotropic defects in ABA response, including decreased sensitivity to ABA inhibition of germination and altered expression of some ABA-regulated genes. Comparison of seed and ABA-inducible vegetative gene expression in wild-type and *abi5-1* plants indicates that ABI5 regulates a subset of late embryogenesis-abundant genes during both developmental stages.

Recommended Dilutions

WB 1:500 - 1:1000

Immunogen Information

Gene ID

818199

Swiss Prot

Q9SJN0

Immunogen

A synthetic peptide corresponding to a sequence within amino acids 50-150 of arabidopsis thaliana ABI5 (NP_001324735.1).

Synonyms

ABA INSENSITIVE 5; AtABI5; F2H17.12; F2H17_12; GIA1; GROWTH-INSENSITIVITY TO ABA 1; ABI5

Contact

☎ | 400-999-6126

✉ | cn.market@abclonal.com.cn

🌐 | www.abclonal.com.cn

Product Information

Source

Rabbit

Isotype

IgG

Purification

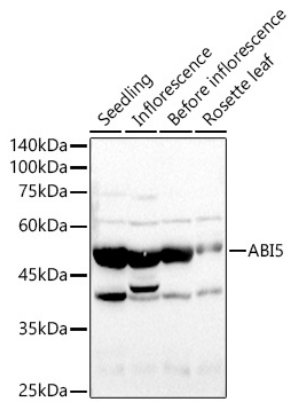
Affinity purification

Storage

Store at -20°C. Avoid freeze / thaw cycles.

Buffer: PBS with 0.05% proclin300, 50% glycerol, pH7.3.

Validation Data



Western blot analysis of various lysates using ABI5 Rabbit pAb (A21249) at 1:1000 dilution.
Secondary antibody: HRP Goat Anti-Rabbit IgG (H+L) (AS014) at 1:10000 dilution.
Lysates/proteins: 25 μ g per lane.
Blocking buffer: 3% nonfat dry milk in TBST.
Detection: ECL Basic Kit (RM00020).
Exposure time: 30s.