

# MT-ND6 Rabbit mAb

Catalog No.: A21250 **Recombinant**

## Basic Information

### Observed MW

Refer to figures

### Calculated MW

19kDa

### Category

Primary antibody

### Applications

ELISA, IHC-P

### Cross-Reactivity

Human

### CloneNo number

ARC52554

## Background

Enables NADH dehydrogenase (ubiquinone) activity. Involved in mitochondrial electron transport, NADH to ubiquinone and mitochondrial respiratory chain complex I assembly. Predicted to be located in mitochondrial inner membrane. Implicated in Leber hereditary optic neuropathy; Leigh disease; and spinal muscular atrophy with lower extremity predominate 2B.

## Recommended Dilutions

IHC-P 1:50 - 1:200

## Immunogen Information

### Gene ID

4541

### Swiss Prot

P03923

### Immunogen

A synthetic peptide corresponding to a sequence within amino acids 70-150 of human MT-ND6 (YP\_003024037.1).

### Synonyms

MTND6; ND6; MT-ND6

## Contact

☎ | 400-999-6126

✉ | [cn.market@abclonal.com.cn](mailto:cn.market@abclonal.com.cn)

🌐 | [www.abclonal.com.cn](http://www.abclonal.com.cn)

## Product Information

### Source

Rabbit

### Isotype

IgG

### Purification

Affinity purification

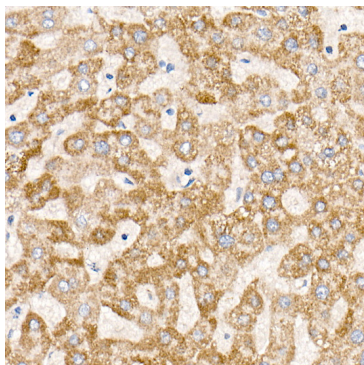
### Storage

Store at -20°C. Avoid freeze / thaw cycles.

Buffer: PBS with 0.05% proclin300, 0.05% BSA, 50% glycerol, pH7.3.

## Validation Data

---



Immunohistochemistry analysis of paraffin-embedded human liver using MT-ND6 Rabbit mAb (A21250) at dilution of 1:200 (40x lens). Perform high pressure antigen retrieval with 10 mM citrate buffer pH 6.0 before commencing with IHC staining protocol.