

Cardiac Troponin I (TNNI3) Rabbit mAb

Catalog No.: A21251 **Recombinant**

Basic Information

Observed MW

Refer to figures

Calculated MW

24kDa

Category

Primary antibody

Applications

ELISA, IHC-P, IF/ICC

Cross-Reactivity

Human

CloneNo number

ARC5109-05

Background

Troponin I (TnI), along with troponin T (TnT) and troponin C (TnC), is one of 3 subunits that form the troponin complex of the thin filaments of striated muscle. TnI is the inhibitory subunit; blocking actin-myosin interactions and thereby mediating striated muscle relaxation. The TnI subfamily contains three genes: TnI-skeletal-fast-twitch, TnI-skeletal-slow-twitch, and TnI-cardiac. This gene encodes the TnI-cardiac protein and is exclusively expressed in cardiac muscle tissues. Mutations in this gene cause familial hypertrophic cardiomyopathy type 7 (CMH7) and familial restrictive cardiomyopathy (RCM). Troponin I is useful in making a diagnosis of heart failure, and of ischemic heart disease. An elevated level of troponin is also now used as indicator of acute myocardial injury in patients hospitalized with moderate/severe Coronavirus Disease 2019 (COVID-19). Such elevation has also been associated with higher risk of mortality in cardiovascular disease patients hospitalized due to COVID-19.

Recommended Dilutions

IHC-P 1:100 - 1:500

IF/ICC 1:50 - 1:200

Immunogen Information

Gene ID

7137

Swiss Prot

P19429

Immunogen

Recombinant fusion protein containing a sequence corresponding to amino acids 1-210 of human Cardiac Troponin I (TNNI3) (NP_000354.4)

Synonyms

CMH7; RCM1; cTnI; CMD2A; TNNC1; CMD1FF; Cardiac Troponin I (TNNI3)

Contact

 | 400-999-6126 | cn.market@abclonal.com.cn | www.abclonal.com.cn

Product Information

Source

Rabbit

Isotype

IgG

Purification

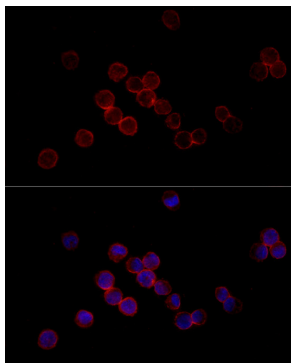
Affinity purification

Storage

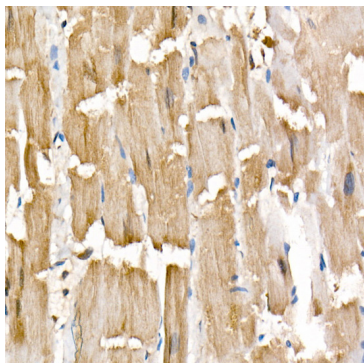
Store at -20°C. Avoid freeze / thaw cycles.

Buffer: PBS with 0.05% proclin300, 0.05% BSA, 50% glycerol, pH7.3.

Validation Data



Immunofluorescence analysis of K-562 cells using Cardiac Troponin I (TNNI3) Rabbit mAb (A21251) at dilution of 1:100 (40x lens). Secondary antibody: Cy3 Goat Anti-Rabbit IgG (H+L) (AS007) at 1:500 dilution. Blue: DAPI for nuclear staining.



Immunohistochemistry analysis of paraffin-embedded Human heart using Cardiac Troponin I (TNNI3) Rabbit mAb (A21251) at dilution of 1:300 (40x lens). Perform high pressure antigen retrieval with 10 mM citrate buffer pH 6.0 before commencing with IHC staining protocol.