

ATR Rabbit mAb

Catalog No.: A21253 **Recombinant** **1 Publications**

Basic Information

Observed MW

301kDa

Calculated MW

301kDa

Category

Primary antibody

Applications

WB,ELISA

Cross-Reactivity

Human, Mouse

CloneNo number

ARC51749

Background

The protein encoded by this gene is a serine/threonine kinase and DNA damage sensor, activating cell cycle checkpoint signaling upon DNA stress. The encoded protein can phosphorylate and activate several proteins involved in the inhibition of DNA replication and mitosis, and can promote DNA repair, recombination, and apoptosis. This protein is also important for fragile site stability and centrosome duplication. Defects in this gene are a cause of Seckel syndrome 1.

Recommended Dilutions

WB 1:1000 - 1:2000

ELISA Recommended starting concentration is 1 µg/mL. Please optimize the concentration based on your specific assay requirements.

Immunogen Information

Gene ID

545

Swiss Prot

Q13535

Immunogen

A synthetic peptide corresponding to a sequence within amino acids 2100-2200 of human ATR (NP_001175.2).

Synonyms

FRP1; MEC1; SCKL; FCTCS; SCKL1; ATR

Contact

☎ | 400-999-6126

✉ | cn.market@abclonal.com.cn

🌐 | www.abclonal.com.cn

Product Information

Source

Rabbit

Isotype

IgG

Purification

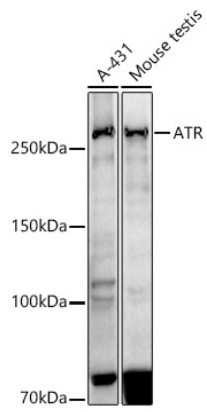
Affinity purification

Storage

Store at -20°C. Avoid freeze / thaw cycles.

Buffer: PBS with 0.05% proclin300,0.05% BSA,50% glycerol,pH7.3.

Validation Data



Western blot analysis of various lysates using ATR Rabbit mAb (A21253) at 1:1000 dilution.
Secondary antibody: HRP-conjugated Goat anti-Rabbit IgG (H+L) (AS014) at 1:10000 dilution.
Lysates/proteins: 25µg per lane.
Blocking buffer: 3% nonfat dry milk in TBST.
Detection: ECL Basic Kit (RM00020).
Exposure time: 180s.