

GATA1 Rabbit mAb

Catalog No.: A21262 **Recombinant**

Basic Information

Observed MW

47kDa

Calculated MW

43kDa

Category

Primary antibody

Applications

ELISA, WB, IP

Cross-Reactivity

Human

CloneNo number

ARC53588

Background

This gene encodes a protein which belongs to the GATA family of transcription factors. The protein plays an important role in erythroid development by regulating the switch of fetal hemoglobin to adult hemoglobin. Mutations in this gene have been associated with X-linked dyserythropoietic anemia and thrombocytopenia.

Recommended Dilutions

WB 1:500 - 1:1000

IP 0.5µg-4µg antibody for
200µg-600µg extracts of
whole cells

Immunogen Information

Gene ID

2623

Swiss Prot

P15976

Immunogen

A synthetic peptide corresponding to a sequence within amino acids 1-100 of human GATA1 (NP_002040.1).

Synonyms

GF1; GF-1; NFE1; XLTT; ERYF1; NF-E1; XLANP; XLTDA; GATA-1; HAEADA; GATA1

Contact

☎ | 400-999-6126

✉ | cn.market@abclonal.com.cn

🌐 | www.abclonal.com.cn

Product Information

Source

Rabbit

Isotype

IgG

Purification

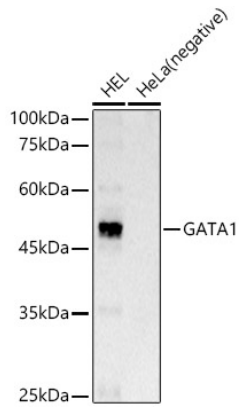
Affinity purification

Storage

Store at -20°C. Avoid freeze / thaw cycles.

Buffer: PBS with 0.05% proclin300, 0.05% BSA, 50% glycerol, pH7.3.

Validation Data



Western blot analysis of various lysates, using GATA1 Rabbit mAb (A21262) at 1:1000 dilution.
Secondary antibody: HRP Goat Anti-Rabbit IgG (H+L) (AS014) at 1:10000 dilution.
Lysates/proteins: 25 μ g per lane.
Blocking buffer: 3% nonfat dry milk in TBST.
Detection: ECL Basic Kit (RM00020).
Exposure time: 3s.