

# Interferon alpha 2 (IFN- $\alpha$ 2) Rabbit mAb

Catalog No.: A21263 **Recombinant** **1 Publications**

## Basic Information

**Observed MW**

20kDa

**Calculated MW**

22kDa

**Category**

Primary antibody

**Applications**

WB,IHC-P,ELISA

**Cross-Reactivity**

Human, Mouse, Rat

**CloneNo number**

ARC53291

## Background

This gene is a member of the alpha interferon gene cluster on chromosome 9. The encoded cytokine is a member of the type I interferon family that is produced in response to viral infection as a key part of the innate immune response with potent antiviral, antiproliferative and immunomodulatory properties. This cytokine, like other type I interferons, binds a plasma membrane receptor made of IFNAR1 and IFNAR2 that is ubiquitously expressed, and thus is able to act on virtually all body cells. The encoded protein is effective in reducing the symptoms and duration of the common cold and in treating many types of cancer, including some hematological malignancies and solid tumors. A deficiency of type I interferon in the blood is thought to be a hallmark of severe COVID-19 and may provide a rationale for a combined therapeutic approach.

## Recommended Dilutions

**WB** 1:2000 - 1:6000**IHC-P** 1:50 - 1:200**ELISA** Recommended starting concentration is 1  $\mu$ g/mL. Please optimize the concentration based on your specific assay requirements.

## Immunogen Information

**Gene ID**

3440

**Swiss Prot**

P01563

**Immunogen**

Recombinant protein (or fragment). This information is considered to be commercially sensitive.

**Synonyms**IFNA; IFNA2B; IeIF A; IFN-alphaA; IFN-alpha-2; Interferon alpha 2 (IFN- $\alpha$ 2)

## Contact

 | 400-999-6126 | [cn.market@abclonal.com.cn](mailto:cn.market@abclonal.com.cn) | [www.abclonal.com.cn](http://www.abclonal.com.cn)

## Product Information

**Source**

Rabbit

**Isotype**

IgG

**Purification**

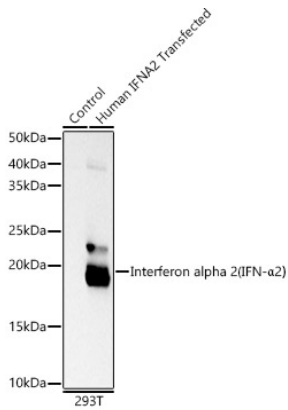
Affinity purification

**Storage**

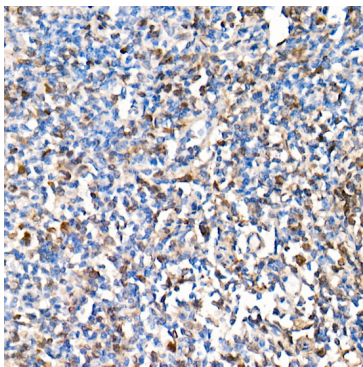
Store at -20°C. Avoid freeze / thaw cycles.

Buffer: PBS containing 50% glycerol and 0.05% BSA, preserved with proclin300 or sodium azide (as specified on the Certificate of Analysis), pH 7.3.

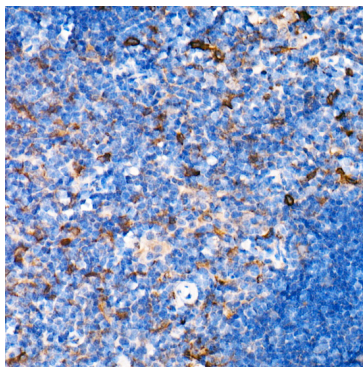
## Validation Data



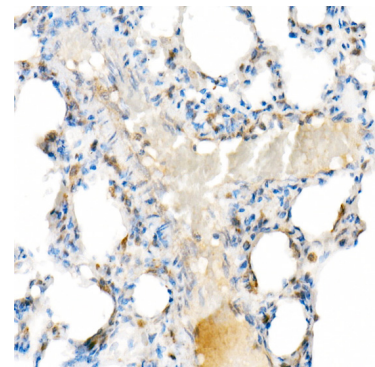
Western blot analysis of lysates from wild type (WT) and 293T cells transfected with Interferon alpha 2 (IFN- $\alpha$ 2) using Interferon alpha 2 (IFN- $\alpha$ 2) Rabbit mAb (A21263) at 1:5000 dilution. Secondary antibody: HRP-conjugated Goat anti-Rabbit IgG (H+L) (AS014) at 1:5000 dilution. Lysates/proteins: 25 $\mu$ g per lane. Blocking buffer: 3% nonfat dry milk in TBST. Detection: ECL Basic Kit (RM00020). Exposure time: 0.5s.



Immunohistochemistry analysis of paraffin-embedded Human tonsil using Interferon alpha 2 (IFN- $\alpha$ 2) Rabbit mAb (A21263) at dilution of 1:200 (40x lens). High pressure antigen retrieval performed with 0.01M Citrate buffer (pH 7.2) prior to IHC staining.



Immunohistochemistry analysis of paraffin-embedded Mouse thymus using Interferon alpha 2 (IFN- $\alpha$ 2) Rabbit mAb (A21263) at dilution of 1:200 (40x lens). High pressure antigen retrieval performed with 0.01M Citrate buffer (pH 7.2) prior to IHC staining.



Immunohistochemistry analysis of paraffin-embedded Rat lung using Interferon alpha 2 (IFN- $\alpha$ 2) Rabbit mAb (A21263) at dilution of 1:200 (40x lens). High pressure antigen retrieval performed with 0.01M Citrate buffer (pH 7.2) prior to IHC staining.