

IL6 Rabbit mAb

Catalog No.: A21264 **Recombinant** **3 Publications**

Basic Information

Observed MW

Refer to figures

Calculated MW

24kDa

Category

Primary antibody

Applications

ELISA, IHC-P, IF/ICC

Cross-Reactivity

Human, Rat

CloneNo number

ARC53388

Background

Enables cytokine activity and interleukin-6 receptor binding activity. Involved in several processes, including cellular response to lipid; positive regulation of cell communication; and response to peptide hormone. Located in cytoplasm and extracellular space. Used to study several diseases, including acute necrotizing pancreatitis; disseminated intravascular coagulation; fatty liver disease; hypertension (multiple); and impotence. Biomarker of several diseases, including acute necrotizing pancreatitis; artery disease (multiple); auditory system disease (multiple); iron deficiency anemia; and lung disease (multiple). Human ortholog(s) of this gene implicated in several diseases, including autoimmune disease (multiple); eye disease (multiple); gastrointestinal system cancer (multiple); glucose metabolism disease (multiple); and periodontal disease (multiple). Orthologous to human IL6 (interleukin 6).

Recommended Dilutions

IHC-P 1:100 - 1:500

IF/ICC 1:50 - 1:200

Immunogen Information

Gene ID

24498

Swiss Prot

P20607

Immunogen

Recombinant fusion protein containing a sequence corresponding to amino acids 25-211 of rat IL6 (NP_036721.1).

Synonyms

ILg6; Ifnb2; IL6

Contact

 | 400-999-6126 | cn.market@abclonal.com.cn | www.abclonal.com.cn

Product Information

Source

Rabbit

Isotype

IgG

Purification

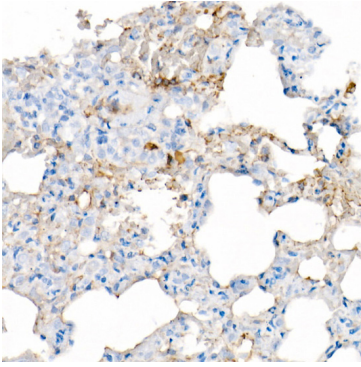
Affinity purification

Storage

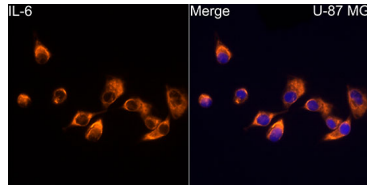
Store at -20°C. Avoid freeze / thaw cycles.

Buffer: PBS with 0.05% proclin300, 0.05% BSA, 50% glycerol, pH7.3.

Validation Data



Immunohistochemistry analysis of paraffin-embedded Rat lung using IL6 Rabbit mAb (A21264) at dilution of 1:500 (40x lens). High pressure antigen retrieval performed with 0.01M Citrate Bufferr (pH 6.0) prior to IHC staining.



Immunofluorescence analysis of U-87MG cells using IL6 Rabbit mAb (A21264) at dilution of 1:50 (40x lens). Secondary antibody: Cy3-conjugated Goat anti-Rabbit IgG (H+L) (AS007) at 1:500 dilution. Blue: DAPI for nuclear staining.