

BSU1 Rabbit pAb

Catalog No.: A21273

Basic Information

Observed MW

88kDa

Calculated MW

88kDa

Category

Primary antibody

Applications

ELISA, WB

Cross-Reactivity

Arabidopsis thaliana

Background

encodes a serine/threonine protein phosphatase with an N-terminal Kelch-repeat domain, which is nuclear localized and expressed preferentially in elongating cells. Genetic evidence suggest that this gene plays a redundant role (along with other members of the same gene family) in modulating growth in response to brassinosteroid.

Recommended Dilutions

WB 1:500 - 1:1000

Immunogen Information

Gene ID

838804

Swiss Prot

Q9LR78

Immunogen

A synthetic peptide corresponding to a sequence within amino acids 694-793 of arabidopsis thaliana BSU1 (NP_171844.6).

Synonyms

BRI1 SUPPRESSOR 1; F21B7.7; BSU1

Contact

☎ | 400-999-6126

✉ | cn.market@abclonal.com.cn

🌐 | www.abclonal.com.cn

Product Information

Source

Rabbit

Isotype

IgG

Purification

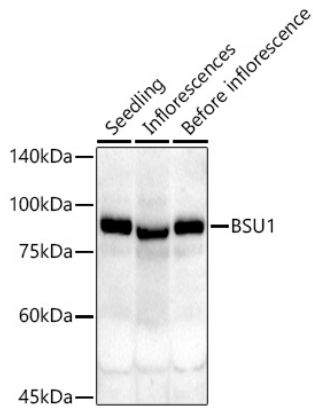
Affinity purification

Storage

Store at -20°C. Avoid freeze / thaw cycles.

Buffer: PBS with 0.05% proclin300, 50% glycerol, pH7.3.

Validation Data



Western blot analysis of extracts of various tissues from *Arabidopsis thaliana*, using BSU1 Rabbit pAb (A21273) at 1:1000 dilution.

Secondary antibody: HRP Goat Anti-Rabbit IgG (H+L) (AS014) at 1:10000 dilution.

Lysates/proteins: 25µg per lane.

Blocking buffer: 3% nonfat dry milk in TBST.

Detection: ECL Basic Kit (RM00020).

Exposure time: 90s.