

# Med25 Rabbit pAb

Catalog No.: A21274

## Basic Information

### Observed MW

75kDa

### Calculated MW

90kDa

### Category

Primary antibody

### Applications

WB, ELISA

### Cross-Reactivity

Arabidopsis thaliana

## Background

Encodes a nuclear protein that acts in a phyB pathway (but downstream of phyB) and induces flowering in response to suboptimal light conditions. PFT1 promotes flowering in CO dependent and independent pathways and integrates several environmental stimuli, such as light quality and JA-dependent defenses. Mutants are hypo-responsive to far-red and hyper-responsive to red light and flower late under long day conditions. Also shown to be a Mediator subunit regulating jasmonate-dependent defense.

## Recommended Dilutions

**WB** 1:500 - 1:1000

**ELISA** Recommended starting concentration is 1 µg/mL. Please optimize the concentration based on your specific assay requirements.

## Immunogen Information

### Gene ID

839141

### Swiss Prot

Q7XY2

### Immunogen

A synthetic peptide corresponding to a sequence within amino acids 200-300 of arabidopsis thaliana Med25 (NP\_173925.3).

### Synonyms

F2J7.4; F2J7\_4; MED25; mediator 25; PHYTOCHROME AND FLOWERING TIME 1; Med25

## Contact

☎ | 400-999-6126

✉ | [cn.market@abclonal.com.cn](mailto:cn.market@abclonal.com.cn)

🌐 | [www.abclonal.com.cn](http://www.abclonal.com.cn)

## Product Information

### Source

Rabbit

### Isotype

IgG

### Purification

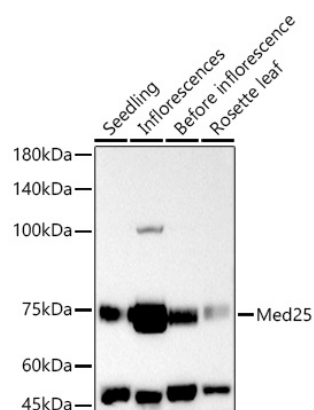
Affinity purification

### Storage

Store at -20°C. Avoid freeze / thaw cycles.

Buffer: PBS with 0.05% proclin300, 50% glycerol, pH7.3.

## Validation Data



Western blot analysis of extracts of various tissues from *Arabidopsis thaliana*, using Med25 Rabbit pAb (A21274) at 1:1000 dilution.

Secondary antibody: HRP-conjugated Goat anti-Rabbit IgG (H+L) (AS014) at 1:10000 dilution.

Lysates/proteins: 25µg per lane.

Blocking buffer: 3% nonfat dry milk in TBST.

Detection: ECL Basic Kit (RM00020).

Exposure time: 90s.