

# RAV1 Rabbit pAb

Catalog No.: A21275

## Basic Information

### Observed MW

39kDa

### Calculated MW

39kDa

### Category

Primary antibody

### Applications

ELISA, WB

### Cross-Reactivity

Arabidopsis thaliana

## Background

Encodes an AP2/B3 domain transcription factor which is upregulated in response to low temperature. It contains a B3 DNA binding domain. It has circadian regulation and may function as a negative growth regulator.

## Recommended Dilutions

WB 1:500 - 1:1000

## Immunogen Information

### Gene ID

837886

### Swiss Prot

Q9ZWM9

### Immunogen

A synthetic peptide corresponding to a sequence within amino acids 245-344 of arabidopsis thaliana RAV1 (NP\_172784.1).

### Synonyms

AtRAV1; EDF4; ETHYLENE RESPONSE DNA BINDING FACTOR 4; related to ABI3/VP1 1; T6J4.2; T6J4\_2; RAV1

## Contact

 | 400-999-6126

 | [cn.market@abclonal.com.cn](mailto:cn.market@abclonal.com.cn)

 | [www.abclonal.com.cn](http://www.abclonal.com.cn)

## Product Information

### Source

Rabbit

### Isotype

IgG

### Purification

Affinity purification

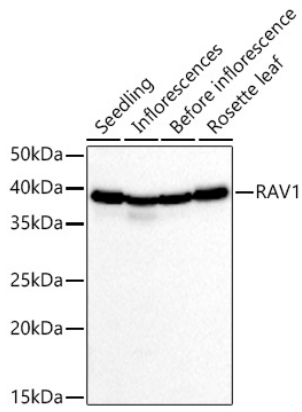
### Storage

Store at -20°C. Avoid freeze / thaw cycles.

Buffer: PBS with 0.05% proclin300, 50% glycerol, pH7.3.

## Validation Data

---



Western blot analysis of extracts of various tissues from *Arabidopsis thaliana*, using RAV1 Rabbit pAb (A21275) at 1:1000 dilution.

Secondary antibody: HRP Goat Anti-Rabbit IgG (H+L) (AS014) at 1:10000 dilution.

Lysates/proteins: 25µg per lane.

Blocking buffer: 3% nonfat dry milk in TBST.

Detection: ECL Basic Kit (RM00020).

Exposure time: 10s.