

TIR1 Rabbit pAb

Catalog No.: A21276

Basic Information

Observed MW

67kDa

Calculated MW

67kDa

Category

Primary antibody

Applications

ELISA, WB

Cross-Reactivity

Arabidopsis thaliana

Background

Encodes an auxin receptor that mediates auxin-regulated transcription. It contains leucine-rich repeats and an F-box and interacts with ASK1, ASK2 and AtCUL1 to form SCF-TIR1, an SCF ubiquitin ligase complex. Related to yeast Grr1p and human SKP2 proteins, involved in ubiquitin-mediated processes. Required for normal response to auxin and repressed in response to flagellin. As part of the SCF complex and in the presence of auxin, TIR1 interacts with Aux/IAA transcriptional repressor proteins and mediates their degradation. Mutations in TIR1 block auxin stimulation of flavonoid synthesis.

Recommended Dilutions

WB 1:500 - 1:1000

Immunogen Information

Gene ID

825473

Swiss Prot

Q570C0

Immunogen

A synthetic peptide corresponding to a sequence within amino acids 495-594 of arabidopsis thaliana TIR1 (NP_567135.1).

Synonyms

AtTIR1; TRANSPORT INHIBITOR RESPONSE 1; TIR1

Contact

 | 400-999-6126

 | cn.market@abclonal.com.cn

 | www.abclonal.com.cn

Product Information

Source

Rabbit

Isotype

IgG

Purification

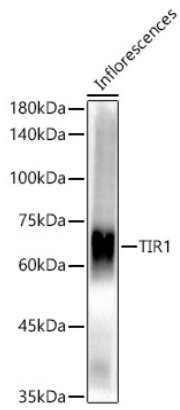
Affinity purification

Storage

Store at -20°C. Avoid freeze / thaw cycles.

Buffer: PBS with 0.05% proclin300, 50% glycerol, pH7.3.

Validation Data



Western blot analysis of lysates from Inflorescences, using TIR1 Rabbit pAb (A21276) at 1:1000 dilution.
Secondary antibody: HRP Goat Anti-Rabbit IgG (H+L) (AS014) at 1:10000 dilution.
Lysates/proteins: 25µg per lane.
Blocking buffer: 3% nonfat dry milk in TBST.
Detection: ECL Basic Kit (RM00020).
Exposure time: 60s.