

DET1 Rabbit pAb

Catalog No.: A21277

Basic Information

Observed MW

62kDa

Calculated MW

62kDa

Category

Primary antibody

Applications

ELISA, WB

Cross-Reactivity

Arabidopsis thaliana

Background

Encodes a nuclear-localized protein that acts as a repressor of photomorphogenesis and may be involved in chromatin remodeling.

Recommended Dilutions

WB 1:500 - 1:1000

Immunogen Information

Gene ID

826609

Swiss Prot

P48732

Immunogen

A synthetic peptide corresponding to a sequence within amino acids 350-450 of arabidopsis thaliana DET1 (NP_192756.2).

Synonyms

ATDET1; DE-ETIOLATED 1; FUS2; FUSCA 2; T9A4.17; DET1

Contact

☎ | 400-999-6126

✉ | cn.market@abclonal.com.cn

🌐 | www.abclonal.com.cn

Product Information

Source

Rabbit

Isotype

IgG

Purification

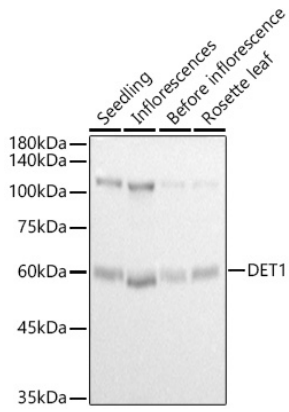
Affinity purification

Storage

Store at -20°C. Avoid freeze / thaw cycles.

Buffer: PBS with 0.05% proclin300, 50% glycerol, pH7.3.

Validation Data



Western blot analysis of extracts of various tissues from *Arabidopsis thaliana*, using DET1 Rabbit pAb (A21277) at 1:1000 dilution.

Secondary antibody: HRP Goat Anti-Rabbit IgG (H+L) (AS014) at 1:10000 dilution.

Lysates/proteins: 25µg per lane.

Blocking buffer: 3% nonfat dry milk in TBST.

Detection: ECL Basic Kit (RM00020).

Exposure time: 10s.