

# COR28 Rabbit pAb

Catalog No.: A21278

## Basic Information

### Observed MW

30kDa

### Calculated MW

25kDa

### Category

Primary antibody

### Applications

ELISA, WB

### Cross-Reactivity

Arabidopsis thaliana

## Background

Light and temperature are two key environmental signals that profoundly affect plant growth and development, COR28 and COR27 are negative regulators of freezing tolerance but positive regulators of flowering. They are involved in central circadian clock regulation and in flowering promotion, by binding to the chromatin of clock-associated evening genes TOC1, PRR5, ELF4 and cold-responsive genes in order to repress their transcription. And also are direct targets of CCA1, which represses their transcription via chromatin binding.

## Recommended Dilutions

WB 1:500 - 1:1000

## Immunogen Information

### Gene ID

829544

### Swiss Prot

Q8L983

### Immunogen

Recombinant fusion protein containing a sequence corresponding to amino acids 50-170 of arabidopsis thaliana COR28 (NP\_567946.1).

### Synonyms

F17I5.170; F17I5\_170; COR28

## Contact

☎ | 400-999-6126

✉ | [cn.market@abclonal.com.cn](mailto:cn.market@abclonal.com.cn)

🌐 | [www.abclonal.com.cn](http://www.abclonal.com.cn)

## Product Information

### Source

Rabbit

### Isotype

IgG

### Purification

Affinity purification

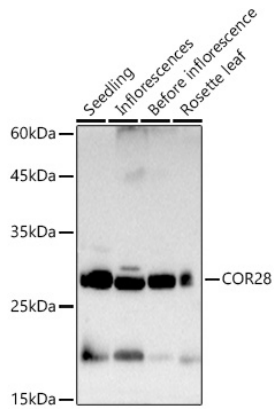
### Storage

Store at -20°C. Avoid freeze / thaw cycles.

Buffer: PBS with 0.05% proclin300, 50% glycerol, pH7.3.

## Validation Data

---



Western blot analysis of extracts of various tissues from *Arabidopsis thaliana*, using COR28 Rabbit pAb (A21278) at 1:1000 dilution.

Secondary antibody: HRP Goat Anti-Rabbit IgG (H+L) (AS014) at 1:10000 dilution.

Lysates/proteins: 25µg per lane.

Blocking buffer: 3% nonfat dry milk in TBST.

Detection: ECL Basic Kit (RM00020).

Exposure time: 30s.