

# BES1 Rabbit pAb

Catalog No.: A21282

## Basic Information

### Observed MW

43kDa

### Calculated MW

36kDa

### Category

Primary antibody

### Applications

ELISA, WB

### Cross-Reactivity

Arabidopsis thaliana

## Background

Encodes brassinosteroid (BR) signalling protein that accumulates in the nucleus as dephosphorylated form in response to BRs. Is phosphorylated by the BIN2 GSK3 kinase. It synergistically interacts with BIM1 to bind to E box sequences (CANNTG). The protein contains a nuclear localization signal (NLS), followed by a highly conserved amino-terminal domain (N) shared by all family members, a BIN2 phosphorylation domain (P), a PEST motif, involved in protein degradation in the absence of BR, and a carboxyl-terminal domain. BES1 can interact with the ELF6 and REF6 Jumonji N/C-domain containing proteins and may direct them to modify histone methylation upstream of some brassinosteroid responsive-genes. Works with BRAVO to regulate QC division in the root.

## Recommended Dilutions

WB 1:500 - 1:1000

## Immunogen Information

### Gene ID

838518

### Swiss Prot

Q9LN63

### Immunogen

A synthetic peptide corresponding to a sequence within amino acids 100-200 of arabidopsis thaliana BES1 (NP\_973865.1).

### Synonyms

107 PROTEIN; BRASSINAZOLE-RESISTANT 2; BRI1-EMS-SUPPRESSOR 1; BZR2; F18O14.7; F18O14\_7; BES1

## Contact

☎ | 400-999-6126

✉ | [cn.market@abclonal.com.cn](mailto:cn.market@abclonal.com.cn)

🌐 | [www.abclonal.com.cn](http://www.abclonal.com.cn)

## Product Information

### Source

Rabbit

### Isotype

IgG

### Purification

Affinity purification

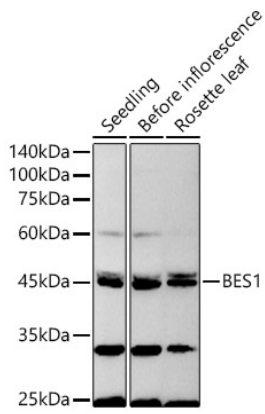
### Storage

Store at -20°C. Avoid freeze / thaw cycles.

Buffer: PBS with 0.05% proclin300, 50% glycerol, pH7.3.

## Validation Data

---



Western blot analysis of extracts of various tissues from *Arabidopsis thaliana*, using BES1 Rabbit pAb (A21282) at 1:1000 dilution.  
Secondary antibody: HRP Goat Anti-Rabbit IgG (H+L) (AS014) at 1:10000 dilution.  
Lysates/proteins: 25µg per lane.  
Blocking buffer: 3% nonfat dry milk in TBST.  
Detection: ECL Basic Kit (RM00020).  
Exposure time: 90s.