

BAK1 Rabbit pAb

Catalog No.: A21283

Basic Information

Observed MW

Calculated MW

68kDa

Category

Primary antibody

Applications

ELISA, WB

Cross-Reactivity

Arabidopsis thaliana

Background

Leu-rich receptor Serine/threonine protein kinase. Component of BR signaling that interacts with BRI1 in vitro and in vivo to form a heterodimer. Brassinolide-dependent association of BRI1 and BAK1 in vivo. Phosphorylation of both BRI1 and BAK1 on Thr residues was BR dependent. Although BAK1 and BRI1 alone localize in the plasma membrane, when BAK1 and BRI1 are coexpressed, the heterodimer BAK1/BRI1 they form is localized in the endosome.

Recommended Dilutions

WB 1:500 - 1:1000

Immunogen Information

Gene ID

829480

Swiss Prot

Q94F62

Immunogen

A synthetic peptide corresponding to a sequence within amino acids 516-615 of arabidopsis thaliana BAK1 (NP_567920.1).

Synonyms

ATBAK1; ATSERK3; BRI1-associated receptor kinase; ELG; ELONGATED; F17M5.190; F17M5_190; RECEPTOR KINASES LIKE SERK 10; RKS10; SERK3; SOMATIC EMBRYOGENESIS RECEPTOR-LIKE KINASE 3; BAK1

Contact

☎ | 400-999-6126

✉ | cn.market@abclonal.com.cn

🌐 | www.abclonal.com.cn

Product Information

Source

Rabbit

Isotype

IgG

Purification

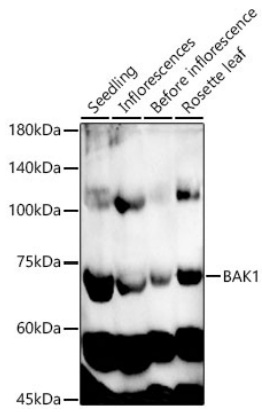
Affinity purification

Storage

Store at -20°C. Avoid freeze / thaw cycles.

Buffer: PBS with 0.05% proclin300, 50% glycerol, pH7.3.

Validation Data



Western blot analysis of extracts of various tissues from *Arabidopsis thaliana*, using BAK1 Rabbit pAb (A21283) at 1:1000 dilution.

Secondary antibody: HRP Goat Anti-Rabbit IgG (H+L) (AS014) at 1:10000 dilution.

Lysates/proteins: 25 μ g per lane.

Blocking buffer: 3% nonfat dry milk in TBST.

Detection: ECL Enhanced Kit (RM00021).

Exposure time: 90s.