

IL10 Rabbit pAb

Catalog No.: A21302

Basic Information

Observed MW

18kDa

Calculated MW

20kDa

Category

Primary antibody

Applications

ELISA, WB

Cross-Reactivity

Human, Rat

Background

Enables interleukin-10 receptor binding activity. Involved in several processes, including cellular response to estradiol stimulus; liver regeneration; and negative regulation of nitric oxide biosynthetic process. Located in extracellular space. Used to study several diseases, including lung disease (multiple); perinatal necrotizing enterocolitis; sciatic neuropathy; toxic encephalopathy; and transient cerebral ischemia. Biomarker of several diseases, including artery disease (multiple); decubitus ulcer; lung disease (multiple); obstructive sleep apnea; and postpartum depression. Human ortholog(s) of this gene implicated in several diseases, including artery disease (multiple); autoimmune disease (multiple); eye disease (multiple); gastrointestinal system cancer (multiple); and hematologic cancer (multiple). Orthologous to human IL10 (interleukin 10).

Recommended Dilutions

WB 1:100 - 1:500

Immunogen Information

Gene ID

25325

Swiss Prot

P29456

Immunogen

Recombinant fusion protein containing a sequence corresponding to amino acids 19-178 of rat Rat IL10 (NP_036986.2).

Synonyms

If2a; IL10X; IL10

Contact

☎ | 400-999-6126

✉ | cn.market@abclonal.com.cn

🌐 | www.abclonal.com.cn

Product Information

Source

Rabbit

Isotype

IgG

Purification

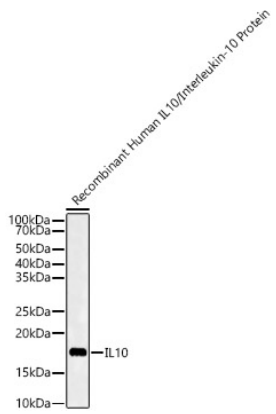
Affinity purification

Storage

Store at -20°C. Avoid freeze / thaw cycles.

Buffer: PBS with 0.05% proclin300, 50% glycerol, pH7.3.

Validation Data



Western blot analysis of various lysates using IL10 Rabbit pAb (A21302) at 1:500 dilution.
Secondary antibody: HRP Goat Anti-Rabbit IgG (H+L) (AS014) at 1:10000 dilution.
Lysates/proteins: 25µg per lane.
Blocking buffer: 3% nonfat dry milk in TBST.
Detection: ECL Basic Kit (RM00020).
Exposure time: 90s.