

# [KO Validated] N-Cadherin Rabbit pAb

Catalog No.: A21308 **KO Validated**

## Basic Information

### Observed MW

140kDa

### Calculated MW

100kDa

### Category

Primary antibody

### Applications

ELISA, WB, IHC-P, IP

### Cross-Reactivity

Human, Mouse, Rat

## Background

This gene encodes a classical cadherin and member of the cadherin superfamily. Alternative splicing results in multiple transcript variants, at least one of which encodes a preproprotein is proteolytically processed to generate a calcium-dependent cell adhesion molecule and glycoprotein. This protein plays a role in the establishment of left-right asymmetry, development of the nervous system and the formation of cartilage and bone.

## Recommended Dilutions

**WB** 1:500 - 1:1000

**IHC-P** 1:50 - 1:200

**IP** 0.5µg-4µg antibody for  
400µg-600µg extracts of  
whole cells

## Immunogen Information

### Gene ID

1000

### Swiss Prot

P19022

### Immunogen

A synthetic peptide corresponding to a sequence within amino acids 807-906 of human N-Cadherin (NP\_001783.2).

### Synonyms

CDHN; NCAD; ACOGS; ADHD8; CD325; ARVD14; CDw325; in

## Contact

 | 400-999-6126

 | [cn.market@abclonal.com.cn](mailto:cn.market@abclonal.com.cn)

 | [www.abclonal.com.cn](http://www.abclonal.com.cn)

## Product Information

### Source

Rabbit

### Isotype

IgG

### Purification

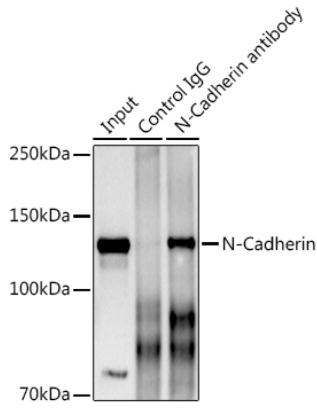
Affinity purification

### Storage

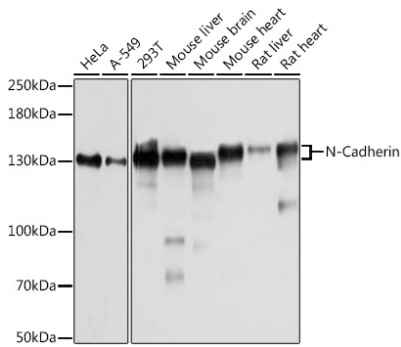
Store at -20°C. Avoid freeze / thaw cycles.

Buffer: PBS with 0.02% sodium azide, 50% glycerol, pH7.3.

## Validation Data



Immunoprecipitation analysis of 600 µg extracts of Mouse brain using 3 µg N-Cadherin antibody (A21308). Western blot was performed from the immunoprecipitate using N-Cadherin antibody (A21308) at a dilution of 1:1000.



Western blot analysis of various lysates using [KO Validated] N-Cadherin Rabbit pAb (A21308) at 1:1000 dilution.

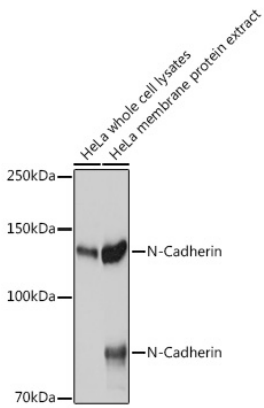
Secondary antibody: HRP Goat Anti-Rabbit IgG (H+L) (AS014) at 1:10000 dilution.

Lysates/proteins: 25µg per lane.

Blocking buffer: 3% nonfat dry milk in TBST.

Detection: ECL Basic Kit (RM00020).

Exposure time: 30s.



Western blot analysis of lysates from HeLa cells, using [KO Validated] N-Cadherin Rabbit pAb (A21308) at 1:1000 dilution.

Secondary antibody: HRP Goat Anti-Rabbit IgG (H+L) (AS014) at 1:10000 dilution.

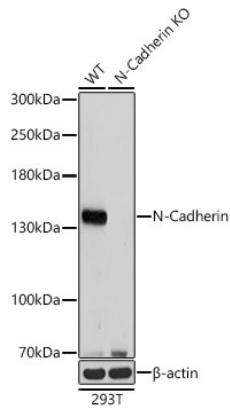
Lysates/proteins: 25µg per lane.

Blocking buffer: 3% nonfat dry milk in TBST.

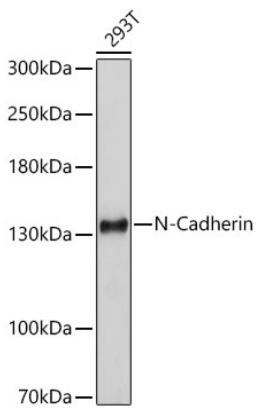
Detection: ECL Basic Kit (RM00020).

Exposure time: 1s.

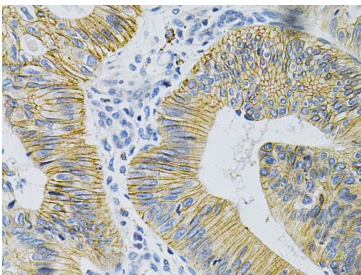
## Validation Data



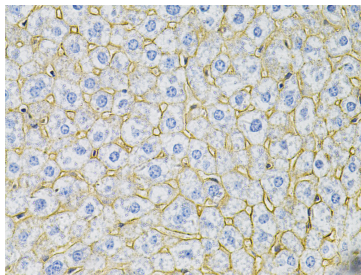
Western blot analysis of lysates from wild type (WT) and N-Cadherin knockout (KO) HeLa cells, using [KO Validated] N-Cadherin Rabbit pAb (A21308) at 1:1000 dilution.  
Secondary antibody: HRP Goat Anti-Rabbit IgG (H+L) (AS014) at 1:10000 dilution.  
Lysates/proteins: 25µg per lane.  
Blocking buffer: 3% nonfat dry milk in TBST.  
Detection: ECL Basic Kit (RM00020).  
Exposure time: 10s.



Western blot analysis of lysates from 293T cells, using [KO Validated] N-Cadherin Rabbit pAb (A21308) at 1:1000 dilution.  
Secondary antibody: HRP Goat Anti-Rabbit IgG (H+L) (AS014) at 1:10000 dilution.  
Lysates/proteins: 25µg per lane.  
Blocking buffer: 3% nonfat dry milk in TBST.  
Detection: ECL Basic Kit (RM00020).  
Exposure time: 10s.



Immunohistochemistry analysis of paraffin-embedded Human colon carcinoma using [KO Validated] N-Cadherin Rabbit pAb (A21308) at dilution of 1:100 (40x lens). Perform microwave antigen retrieval with 10 mM PBS buffer pH 7.2 before commencing with IHC staining protocol.



Immunohistochemistry analysis of paraffin-embedded Mouse liver using [KO Validated] N-Cadherin Rabbit pAb (A21308) at dilution of 1:100 (40x lens). Perform microwave antigen retrieval with 10 mM PBS buffer pH 7.2 before commencing with IHC staining protocol.