

[KO Validated] IKK α Rabbit pAb

Catalog No.: A21354 **KO Validated**

Basic Information

Observed MW

94kDa/85kDa

Calculated MW

85kDa

Category

Primary antibody

Applications

ELISA, WB

Cross-Reactivity

Human

Background

This gene encodes a member of the serine/threonine protein kinase family. The encoded protein, a component of a cytokine-activated protein complex that is an inhibitor of the essential transcription factor NF-kappa-B complex, phosphorylates sites that trigger the degradation of the inhibitor via the ubiquination pathway, thereby activating the transcription factor.

Recommended Dilutions

WB 1:500 - 1:2000

Immunogen Information

Gene ID

1147

Swiss Prot

O15111

Immunogen

A synthetic peptide corresponding to a sequence within amino acids 600-700 of human IKK α (NP_001269.3).

Synonyms

BPS2; IKK1; IKKA; IKBKA; TCF16; NFKBIKA; IKK-alpha; IKK α

Contact

 | 400-999-6126

 | cn.market@abclonal.com.cn

 | www.abclonal.com.cn

Product Information

Source

Rabbit

Isotype

IgG

Purification

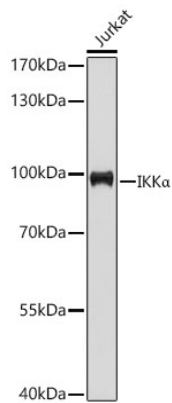
Affinity purification

Storage

Store at -20°C. Avoid freeze / thaw cycles.

Buffer: PBS with 0.01% thimerosal, 50% glycerol, pH7.3.

Validation Data



Western blot analysis of lysates from Jurkat cells using [KO Validated] IKKα Rabbit pAb(A21354) at 1:1000 dilution.

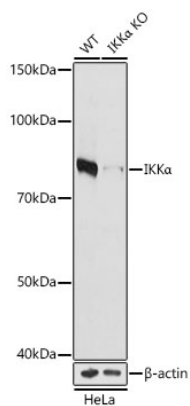
Secondary antibody: HRP Goat Anti-Rabbit IgG (H+L) (AS014) at 1:10000 dilution.

Lysates/proteins: 25 μg per lane.

Blocking buffer: 3% nonfat dry milk in TBST.

Detection: ECL Enhanced Kit (RM00021).

Exposure time: 180s.



Western blot analysis of lysates from wild type (WT) and IKKα knockout (KO) HeLa cells using [KO Validated] IKKα Rabbit pAb (A21354) at 1:500 dilution.

Secondary antibody: HRP Goat Anti-Rabbit IgG (H+L)(AS014) at 1:10000 dilution. Lysates/proteins: 25 μg per lane.

Blocking buffer: 3% nonfat dry milk in TBST.

Detection: ECL Basic Kit (RM00020).

Exposure time: 1s.