

FKBP2 Rabbit pAb

Catalog No.: A21404

Basic Information

Observed MW

Refer to figures

Calculated MW

16kDa

Category

Primary antibody

Applications

ELISA, WB

Cross-Reactivity

Human, Mouse

Background

The protein encoded by this gene is a member of the immunophilin protein family, which play a role in immunoregulation and basic cellular processes involving protein folding and trafficking. This encoded protein is a cis-trans prolyl isomerase that binds the immunosuppressants FK506 and rapamycin. It is thought to function as an ER chaperone and may also act as a component of membrane cytoskeletal scaffolds. Multiple alternatively spliced variants, encoding the same protein, have been identified.

Recommended Dilutions

WB 1:500 - 1:2000

Immunogen Information

Gene ID

2286

Swiss Prot

P26885

Immunogen

Recombinant fusion protein containing a sequence corresponding to amino acids 22-142 of human FKBP2 (NP_004461.2).

Synonyms

FKBP13; PPIase; FKBP-13; FKBP2

Contact

 | 400-999-6126

 | cn.market@abclonal.com.cn

 | www.abclonal.com.cn

Product Information

Source

Rabbit

Isotype

IgG

Purification

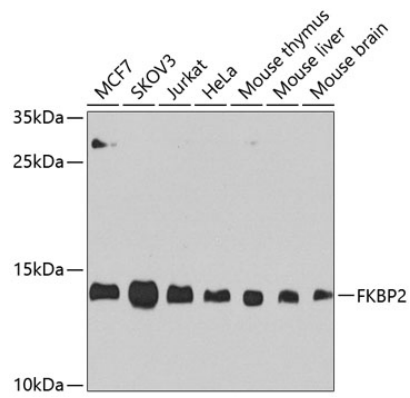
Affinity purification

Storage

Store at -20°C. Avoid freeze / thaw cycles.

Buffer: PBS with 0.02% sodium azide, 50% glycerol, pH 7.3.

Validation Data



Western blot analysis of various lysates using FKBP2 Rabbit pAb (A21404) at 1:1000 dilution.
Secondary antibody: HRP-conjugated Goat anti-Rabbit IgG (H+L) (AS014) at 1:10000 dilution.
Lysates/proteins: 25µg per lane.
Blocking buffer: 3% nonfat dry milk in TBST.
Detection: ECL Basic Kit (RM00020).
Exposure time: 90s.