

REG3G Rabbit pAb

Catalog No.: A2146 **2 Publications**

Basic Information

Observed MW

19kDa

Calculated MW

19kDa

Category

Primary antibody

Applications

WB,IF/ICC,ELISA

Cross-Reactivity

Human, Mouse, Rat

Background

This gene encodes a C-type lectin that demonstrates bactericidal activity. This gene is predominantly expressed in the distal small intestine where the encoded protein undergoes proteolytic processing by trypsin. Mice lacking the encoded protein exhibit altered mucus distribution, increased bacterial contact with the epithelium, and elevated inflammatory markers in the ileum, and low-grade inflammation.

Recommended Dilutions

WB 1:500 - 1:2000

IF/ICC 1:10 - 1:100

ELISA Recommended starting concentration is 1 µg/mL. Please optimize the concentration based on your specific assay requirements.

Immunogen Information

Gene ID

19695

Swiss Prot

Immunogen

A synthetic peptide corresponding to a sequence within amino acids 27-174 of mouse REG3G (NP_035390.1).

Synonyms

REG-3-gamma; reg III-gamma; REG3G

Contact

☎ | 400-999-6126

✉ | cn.market@abclonal.com.cn

🌐 | www.abclonal.com.cn

Product Information

Source

Rabbit

Isotype

IgG

Purification

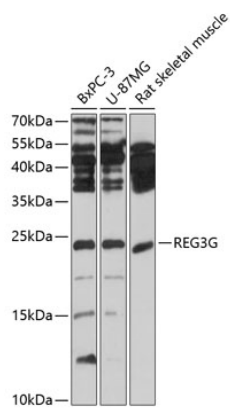
Affinity purification

Storage

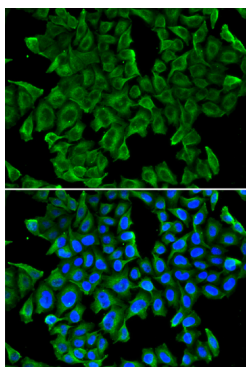
Store at -20°C. Avoid freeze / thaw cycles.

Buffer: PBS with 0.02% sodium azide,50% glycerol,pH7.3.

Validation Data



Western blot analysis of various lysates using REG3G Rabbit pAb (A2146) at 1:1000 dilution.
Secondary antibody: HRP-conjugated Goat anti-Rabbit IgG (H+L) (AS014) at 1:10000 dilution.
Lysates/proteins: 25µg per lane.
Blocking buffer: 3% nonfat dry milk in TBST.
Detection: ECL Basic Kit (RM00020).
Exposure time: 10s.



Immunofluorescence analysis of MCF-7 cells using REG3G Rabbit pAb (A2146). Secondary antibody: Cy3-conjugated Goat anti-Rabbit IgG (H+L) (AS007) at 1:500 dilution. Blue: DAPI for nuclear staining.