

IP3R Rabbit pAb

Catalog No.: A21471 **2 Publications**

Basic Information

Observed MW

320kDa/

Calculated MW

314kDa

Category

Primary antibody

Applications

ELISA,WB,IF/ICC,IP

Cross-Reactivity

Human, Mouse, Rat

Background

This gene encodes an intracellular receptor for inositol 1,4,5-trisphosphate. Upon stimulation by inositol 1,4,5-trisphosphate, this receptor mediates calcium release from the endoplasmic reticulum. Mutations in this gene cause spinocerebellar ataxia type 15, a disease associated with a heterogeneous group of cerebellar disorders. Multiple transcript variants have been identified for this gene.

Recommended Dilutions

WB 1:1000 - 1:5000

IF/ICC 1:50 - 1:200

IP 0.5ug-4ug antibody for
400ug-600ug extracts of
whole cells

Immunogen Information

Gene ID

3708

Swiss Prot

Q14643

Immunogen

A synthetic peptide corresponding to a sequence within amino acids 1812-1911 of human IP3R (NP_001365381).

Synonyms

ACV; CLA4; IP3R; IP3R1; SCA15; SCA16; SCA29; INSP3R1; PPP1R94

Contact

☎ | 400-999-6126

✉ | cn.market@abclonal.com.cn

🌐 | www.abclonal.com.cn

Product Information

Source

Rabbit

Isotype

IgG

Purification

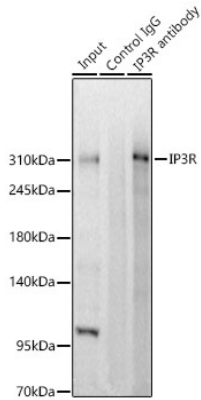
Affinity purification

Storage

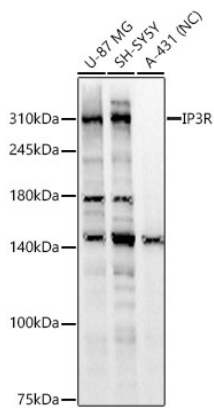
Store at -20°C. Avoid freeze / thaw cycles.

Buffer: PBS with 0.02% sodium azide,50% glycerol,pH7.3.

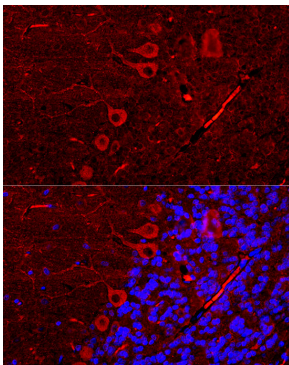
Validation Data



Immunoprecipitation of IP3R from 500 μ g extracts of SH-SY5Y cells was performed using 2 μ g of IP3R Rabbit pAb (A21471). Rabbit IgG isotype control (AC042) was used to precipitate the Control IgG sample. IP samples were eluted with 1X Laemmli Buffer. The Input lane represents 10% of the total input. Western blot analysis of immunoprecipitates was conducted using IP3R Rabbit pAb (A21471) at a dilution of 1:2500.



Western blot analysis of various lysates using IP3R Rabbit pAb (A21471) at 1:2000 dilution. Secondary antibody: HRP Goat Anti-Rabbit IgG (H+L) (AS014) at 1:10000 dilution. Lysates/proteins: 25 μ g per lane. Blocking buffer: 3% nonfat dry milk in TBST. Detection: ECL Basic Kit (RM00020). Negative control (NC): A-431. Exposure time: 10s.



Perform microwave antigen retrieval with 10 mM citrate buffer pH 6.0 before commencing with IF staining protocol. Immunofluorescence analysis of paraffin-embedded Rat Brain using IP3R Rabbit pAb (A21471) at dilution of 1:200 (40x lens). Secondary antibody: Cy3 Goat Anti-Rabbit IgG (H+L) (AS007) at 1:500 dilution. Blue: DAPI for nuclear staining.