

SCCPDH Rabbit pAb

Catalog No.: A2148

Basic Information

Observed MW

45kDa

Calculated MW

47kDa

Category

Primary antibody

Applications

ELISA, WB

Cross-Reactivity

Human, Mouse

Background

Predicted to enable oxidoreductase activity. Predicted to be involved in glycolipid biosynthetic process. Located in lipid droplet and midbody.

Recommended Dilutions

WB 1:500 - 1:2000

Immunogen Information

Gene ID

51097

Swiss Prot

Q8NBX0

Immunogen

Recombinant fusion protein containing a sequence corresponding to amino acids 1-270 of human SCCPDH (NP_057086.2).

Synonyms

NET11; CGI-49; SCCPDH

Contact

☎ | 400-999-6126

✉ | cn.market@abclonal.com.cn

🌐 | www.abclonal.com.cn

Product Information

Source

Rabbit

Isotype

IgG

Purification

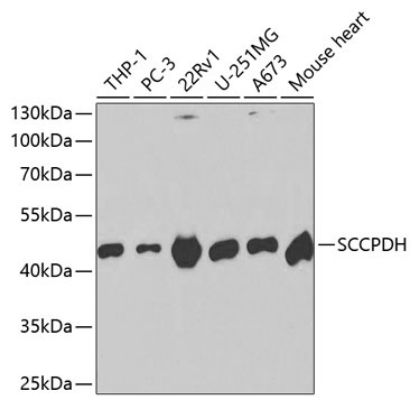
Affinity purification

Storage

Store at -20°C. Avoid freeze / thaw cycles.

Buffer: PBS with 0.02% sodium azide, 50% glycerol, pH7.3.

Validation Data



Western blot analysis of extracts of various cell lines, using SCCPDH antibody (A2148) at 1:1000 dilution.
Secondary antibody: HRP Goat Anti-Rabbit IgG (H+L) (AS014) at 1:10000 dilution.
Lysates/proteins: 25µg per lane.
Blocking buffer: 3% nonfat dry milk in TBST.