

# Galectin 1/LGALS1 Rabbit pAb

Catalog No.: A21483

## Basic Information

### Observed MW

14kDa

### Calculated MW

15kDa

### Category

Primary antibody

### Applications

ELISA, WB

### Cross-Reactivity

Human

## Background

The galectins are a family of beta-galactoside-binding proteins implicated in modulating cell-cell and cell-matrix interactions. This gene product may act as an autocrine negative growth factor that regulates cell proliferation.

## Recommended Dilutions

WB 1:500 - 1:1000

## Immunogen Information

### Gene ID

3956

### Swiss Prot

P09382

### Immunogen

Recombinant Protein corresponding to a sequence within amino acids 1-135 of human Galectin 1/LGALS1 (NP\_002296.1).

### Synonyms

GBP; GAL1; Galectin 1/LGALS1

## Contact

 | 400-999-6126

 | [cn.market@abclonal.com.cn](mailto:cn.market@abclonal.com.cn)

 | [www.abclonal.com.cn](http://www.abclonal.com.cn)

## Product Information

### Source

Rabbit

### Isotype

IgG

### Purification

Affinity purification

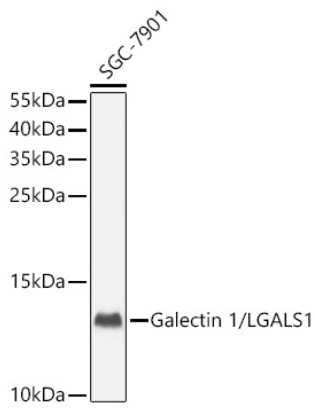
### Storage

Store at -20°C. Avoid freeze / thaw cycles.

Buffer: PBS with 0.02% sodium azide, 50% glycerol, pH 7.3.

## Validation Data

---



Western blot analysis of lysates from SGC-7901 cells using Galectin 1/LGALS1 Rabbit pAb(A21483) at 1:1000 dilution.

Secondary antibody: HRP Goat Anti-Rabbit IgG (H+L) (AS014) at 1:10000 dilution.

Lysates/proteins: 25 µg per lane.

Blocking buffer: 3% nonfat dry milk in TBST.

Detection: ECL Basic Kit (RM00020).

Exposure time: 30s.