

MAP3K1 Rabbit pAb

Catalog No.: A21490

Basic Information

Observed MW

164kDa

Calculated MW

164kDa

Category

Primary antibody

Applications

ELISA, WB, IHC-P, IF/ICC

Cross-Reactivity

Human, Mouse, Rat

Background

The protein encoded by this gene is a serine/threonine kinase and is part of some signal transduction cascades, including the ERK and JNK kinase pathways as well as the NF-kappa-B pathway. The encoded protein is activated by autophosphorylation and requires magnesium as a cofactor in phosphorylating other proteins. This protein has E3 ligase activity conferred by a plant homeodomain (PHD) in its N-terminus and phospho-kinase activity conferred by a kinase domain in its C-terminus.

Recommended Dilutions

WB	1:500 - 1:1000
IHC-P	1:50 - 1:200
IF/ICC	1:50 - 1:200

Immunogen Information

Gene ID

4214

Swiss Prot

Q13233

Immunogen

A synthetic peptide corresponding to a sequence within amino acids 1400-1512 of human MAP3K1 (NP_005912.1).

Synonyms

MEKK; MEKK1; SRXY6; MEKK 1; MAPKKK1; MAP3K1

Contact

☎ | 400-999-6126

✉ | cn.market@abclonal.com.cn

🌐 | www.abclonal.com.cn

Product Information

Source

Rabbit

Isotype

IgG

Purification

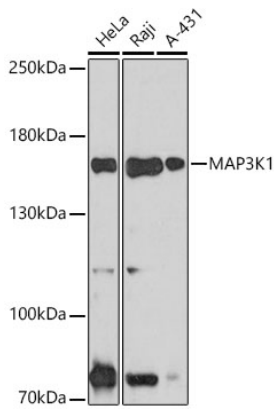
Affinity purification

Storage

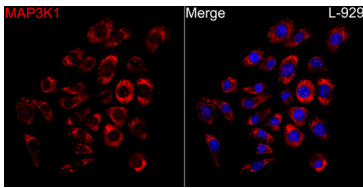
Store at -20°C. Avoid freeze / thaw cycles.

Buffer: PBS with 0.01% thimerosal, 50% glycerol, pH7.3.

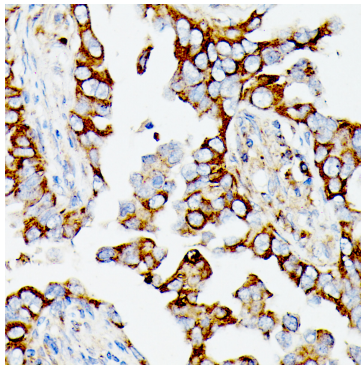
Validation Data



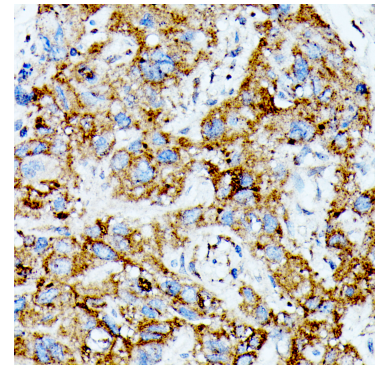
Western blot analysis of various lysates using MAP3K1 (A21490) at 1:1000 dilution.
 Secondary antibody: HRP Goat Anti-Rabbit IgG (H+L) (AS014) at 1:10000 dilution.
 Lysates/proteins: 25ug per lane.
 Blocking buffer: 3% nonfat dry milk in TBST.
 Detection: ECL Basic Kit (RM00020).
 Exposure time: 30s.



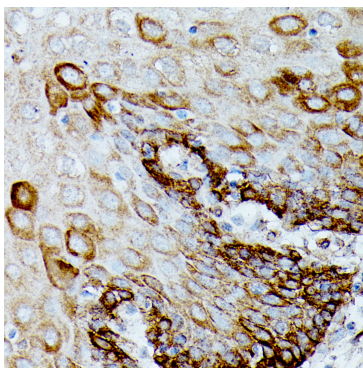
Immunofluorescence analysis of L-929 cells using MAP3K1 Rabbit pAb(A21490) at a dilution of 1:100 (40x lens). Secondary antibody: Cy3 Goat Anti-Rabbit IgG (H+L)(AS007) at 1:500 dilution. Blue: DAPI for nuclear staining.



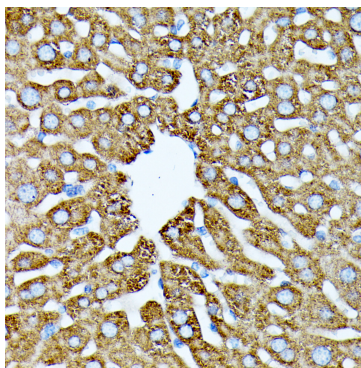
Immunohistochemistry analysis of MAP3K1 in paraffin-embedded human lung cancer tissue using MAP3K1 Rabbit pAb (A21490) at a dilution of 1:100 (40x lens). Microwave antigen retrieval was performed with 0.01 M Tris-EDTA repair solution (pH 9.0) prior to IHC staining.



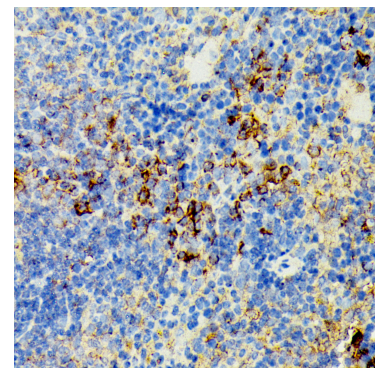
Immunohistochemistry analysis of MAP3K1 in paraffin-embedded human liver cancer tissue using MAP3K1 Rabbit pAb (A21490) at a dilution of 1:100 (40x lens). Microwave antigen retrieval was performed with 0.01 M Tris-EDTA repair solution (pH 9.0) prior to IHC staining.



Immunohistochemistry analysis of MAP3K1 in paraffin-embedded human esophagus tissue using MAP3K1 Rabbit pAb (A21490) at a dilution of 1:100 (40x lens). Microwave antigen retrieval was performed with 0.01 M Tris-EDTA repair solution (pH 9.0) prior to IHC staining.

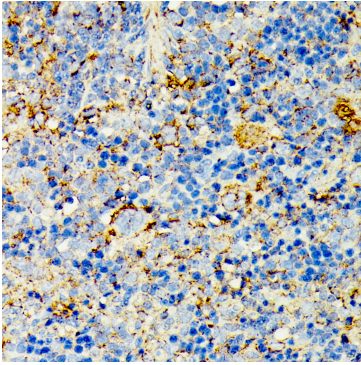


Immunohistochemistry analysis of MAP3K1 in paraffin-embedded mouse liver tissue using MAP3K1 Rabbit pAb (A21490) at a dilution of 1:100 (40x lens). Microwave antigen retrieval was performed with 0.01 M Tris-EDTA repair solution (pH 9.0) prior to IHC staining.

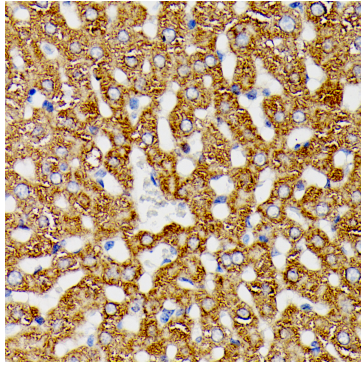


Immunohistochemistry analysis of MAP3K1 in paraffin-embedded mouse spleen tissue using MAP3K1 Rabbit pAb (A21490) at a dilution of 1:100 (40x lens). Microwave antigen retrieval was performed with 0.01 M Tris-EDTA repair solution (pH 9.0) prior to IHC staining.

Validation Data



Immunohistochemistry analysis of MAP3K1 in paraffin-embedded rat spleen tissue using MAP3K1 Rabbit pAb (A21490) at a dilution of 1:100 (40x lens). Microwave antigen retrieval was performed with 0.01 M Tris-EDTA repair solution (pH 9.0) prior to IHC staining.



Immunohistochemistry analysis of MAP3K1 in paraffin-embedded rat liver tissue using MAP3K1 Rabbit pAb (A21490) at a dilution of 1:100 (40x lens). Microwave antigen retrieval was performed with 0.01 M Tris-EDTA repair solution (pH 9.0) prior to IHC staining.