

# PIWIL1 Rabbit pAb

Catalog No.: A2150 **7 Publications**

## Basic Information

### Observed MW

90kDa

### Calculated MW

99kDa

### Category

Primary antibody

### Applications

WB,IHC-P,IF/ICC,ELISA

### Cross-Reactivity

Human, Mouse, Rat

## Background

Enables several functions, including RNA binding activity; mRNA cap binding complex binding activity; and polysome binding activity. Involved in negative regulation of transposition; piRNA metabolic process; and spermatogenesis, exchange of chromosomal proteins. Located in chromatoid body; dense body; and nucleus. Is expressed in genitourinary system. Orthologous to human PIWIL1 (piwi like RNA-mediated gene silencing 1).

## Recommended Dilutions

**WB** 1:500 - 1:1000

**IHC-P** 1:50 - 1:200

**IF/ICC** 1:50 - 1:200

**ELISA** Recommended starting concentration is 1 µg/mL. Please optimize the concentration based on your specific assay requirements.

## Immunogen Information

### Gene ID

57749

### Swiss Prot

Q9JMB7

### Immunogen

Recombinant fusion protein containing a sequence corresponding to amino acids 1-160 of mouse PIWIL1 (NP\_067286.1).

### Synonyms

MIWI; PIWIL1

## Contact

☎ | 400-999-6126

✉ | [cn.market@abclonal.com.cn](mailto:cn.market@abclonal.com.cn)

🌐 | [www.abclonal.com.cn](http://www.abclonal.com.cn)

## Product Information

### Source

Rabbit

### Isotype

IgG

### Purification

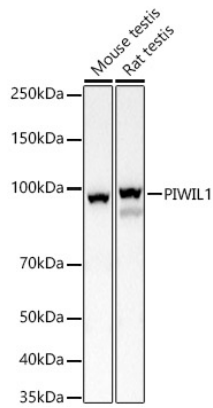
Affinity purification

### Storage

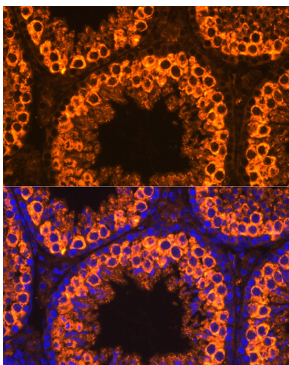
Store at -20°C. Avoid freeze / thaw cycles.

Buffer: PBS with 0.02% sodium azide,50% glycerol,pH7.3.

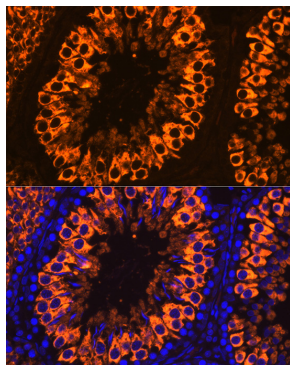
## Validation Data



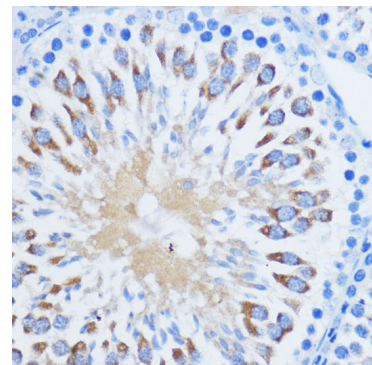
Western blot analysis of various lysates, using PIWIL1 Rabbit pAb (A2150) at 1:500 dilution.  
Secondary antibody: HRP-conjugated Goat anti-Rabbit IgG (H+L) (AS014) at 1:10000 dilution.  
Lysates/proteins: 25µg per lane.  
Blocking buffer: 3% nonfat dry milk in TBST.  
Detection: ECL Basic Kit (RM00020).  
Exposure time: 1s.



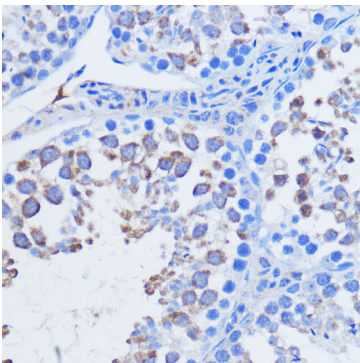
Immunofluorescence analysis of paraffin-embedded Mouse testis using PIWIL1 Rabbit pAb (A2150) at dilution of 1:100. Secondary antibody: Cy3-conjugated Goat anti-Rabbit IgG (H+L) (AS007) at 1:500 dilution. Blue: DAPI for nuclear staining.



Immunofluorescence analysis of paraffin-embedded Rat testis using PIWIL1 Rabbit pAb (A2150) at dilution of 1:100. Secondary antibody: Cy3-conjugated Goat anti-Rabbit IgG (H+L) (AS007) at 1:500 dilution. Blue: DAPI for nuclear staining.



Immunohistochemistry analysis of paraffin-embedded Rat testis using PIWIL1 Rabbit pAb (A2150) at dilution of 1:100 (40x lens). Microwave antigen retrieval performed with 0.01M PBS Buffer (pH 7.2) prior to IHC staining.



Immunohistochemistry analysis of paraffin-embedded Mouse testis using PIWIL1 Rabbit pAb (A2150) at dilution of 1:100 (40x lens). Microwave antigen retrieval performed with 0.01M PBS Buffer (pH 7.2) prior to IHC staining.