

KBTBD3 Rabbit pAb

Catalog No.: A2152

Basic Information

Observed MW

69kDa

Calculated MW

69kDa

Category

Primary antibody

Applications

ELISA, WB

Cross-Reactivity

Human

Background

Is expressed in several structures, including central nervous system; dorsal root ganglion; early conceptus; genitourinary system; and tooth. Orthologous to human KBTBD3 (kelch repeat and BTB domain containing 3).

Recommended Dilutions

WB 1:500 - 1:2000

Immunogen Information

Gene ID

69149

Swiss Prot

Immunogen

Recombinant fusion protein containing a sequence corresponding to amino acids 410-607 of mouse KBTBD3 (NP_081238.2).

Synonyms

Bklhd3; 2200003A07Rik; KBTBD3

Contact

 | 400-999-6126

 | cn.market@abclonal.com.cn

 | www.abclonal.com.cn

Product Information

Source

Rabbit

Isotype

IgG

Purification

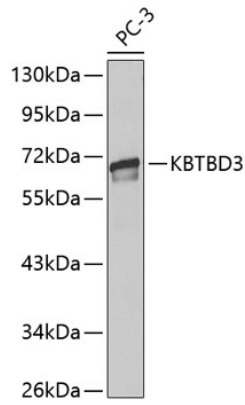
Affinity purification

Storage

Store at -20°C. Avoid freeze / thaw cycles.

Buffer: PBS with 0.02% sodium azide, 50% glycerol, pH 7.3.

Validation Data



Western blot analysis of extracts of PC-3 cells, using KBTBD3 antibody (A2152).
Secondary antibody: HRP Goat Anti-Rabbit IgG (H+L) (AS014) at 1:10000 dilution.
Lysates/proteins: 25µg per lane.
Blocking buffer: 3% nonfat dry milk in TBST.