

# PAX3 Rabbit pAb

Catalog No.: A21524

## Basic Information

### Observed MW

Refer to figures

### Calculated MW

53kDa

### Category

Primary antibody

### Applications

ELISA, IHC-P

### Cross-Reactivity

Human

## Background

This gene is a member of the paired box (PAX) family of transcription factors. Members of the PAX family typically contain a paired box domain and a paired-type homeodomain. These genes play critical roles during fetal development. Mutations in paired box gene 3 are associated with Waardenburg syndrome, craniofacial-deafness-hand syndrome, and alveolar rhabdomyosarcoma. The translocation t(2;13)(q35;q14), which represents a fusion between PAX3 and the forkhead gene, is a frequent finding in alveolar rhabdomyosarcoma. Alternative splicing results in transcripts encoding isoforms with different C-termini.

## Recommended Dilutions

IHC-P 1:50 - 1:200

## Immunogen Information

### Gene ID

5077

### Swiss Prot

P23760

### Immunogen

Recombinant fusion protein containing a sequence corresponding to amino acids 341-479 of human PAX3 (NP\_852122.1).

### Synonyms

WS1; WS3; CDHS; HUP2; PAX-3; PAX3

## Contact

 | 400-999-6126

 | [cn.market@abclonal.com.cn](mailto:cn.market@abclonal.com.cn)

 | [www.abclonal.com.cn](http://www.abclonal.com.cn)

## Product Information

### Source

Rabbit

### Isotype

IgG

### Purification

Affinity purification

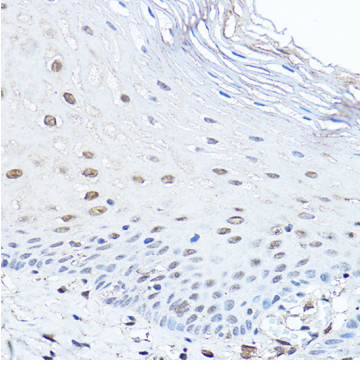
### Storage

Store at -20°C. Avoid freeze / thaw cycles.

Buffer: PBS with 0.01% thimerosal, 50% glycerol, pH7.3.

## Validation Data

---



Immunohistochemistry analysis of paraffin-embedded human esophageal using PAX3 Rabbit pAb (A21524) at dilution of 1:100 (40x lens). Perform high pressure antigen retrieval with 10 mM citrate buffer pH 6.0 before commencing with IHC staining protocol.