

[KO Validated] PEPCK/PCK2 Rabbit pAb

Catalog No.: A21529 **KO Validated**

Basic Information

Observed MW

71kDa

Calculated MW

71kDa

Category

Primary antibody

Applications

WB,IHC-P,IF/ICC,IP,ELISA

Cross-Reactivity

Human,Mouse,Rat

Background

This gene encodes a mitochondrial enzyme that catalyzes the conversion of oxaloacetate to phosphoenolpyruvate in the presence of guanosine triphosphate (GTP). A cytosolic form of this protein is encoded by a different gene and is the key enzyme of gluconeogenesis in the liver. Alternatively spliced transcript variants have been described.

Recommended Dilutions

WB	1:500 - 1:1000
IHC-P	1:50 - 1:200
IF/ICC	1:50 - 1:200
IP	0.5µg-4µg antibody for 200µg-400µg extracts of whole cells
ELISA	Recommended starting concentration is 1 µg/mL. Please optimize the concentration based on your specific assay requirements.

Contact

☎ | 400-999-6126

✉ | cn.market@abclonal.com.cn

🌐 | www.abclonal.com.cn

Immunogen Information

Gene ID

5106

Swiss Prot

Q16822

Immunogen

Recombinant fusion protein containing a sequence corresponding to amino acids 1-280 of human PEPCK/PCK2 (NP_004554.2).

Synonyms

PEPCK; PEPCK2; PEPCK-M; K2

Product Information

Source

Rabbit

Isotype

IgG

Purification

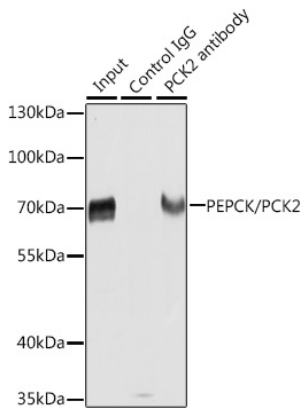
Affinity purification

Storage

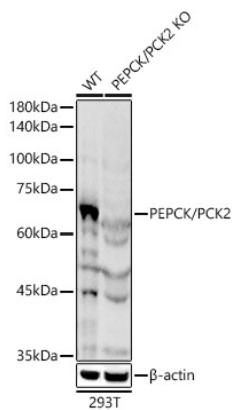
Store at -20°C. Avoid freeze / thaw cycles.

Buffer: PBS with 0.02% sodium azide,50% glycerol,pH7.3.

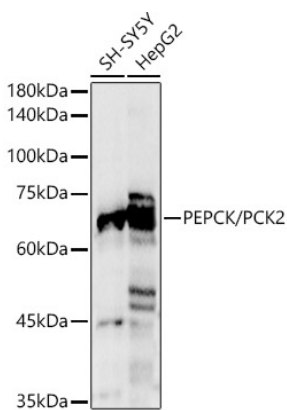
Validation Data



Immunoprecipitation analysis of extracts of HepG2 cells using PEPCK/PEPCK/PCK2 antibody (A21529). Western blot was performed from the immunoprecipitate using PEPCK/PEPCK/PCK2 antibody (A21529) at a dilution of 1:1000.

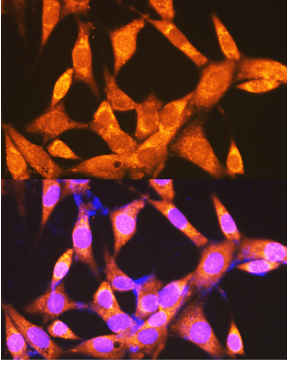


Western blot analysis of lysates from wild type (WT) and PEPCK/PCK2 Rabbit pAb knockout (KO) 293T cells, using [KO Validated] PEPCK/PCK2 Rabbit pAb (A21529) at 1:1000 dilution. Secondary antibody: HRP-conjugated Goat anti-Rabbit IgG (H+L) (AS014) at 1:10000 dilution. Lysates/proteins: 25 μ g per lane. Blocking buffer: 3% nonfat dry milk in TBST. Detection: ECL Basic Kit (RM00020). Exposure time: 3s.

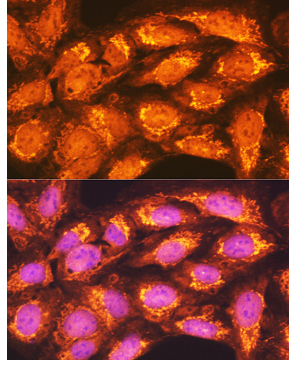


Western blot analysis of various lysates, using [KO Validated] PEPCK/PCK2 Rabbit pAb (A21529) at 1:1000 dilution. Secondary antibody: HRP-conjugated Goat anti-Rabbit IgG (H+L) (AS014) at 1:10000 dilution. Lysates/proteins: 25 μ g per lane. Blocking buffer: 3% nonfat dry milk in TBST. Detection: ECL Basic Kit (RM00020). Exposure time: 3s.

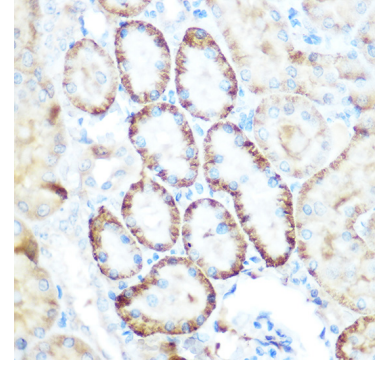
Validation Data



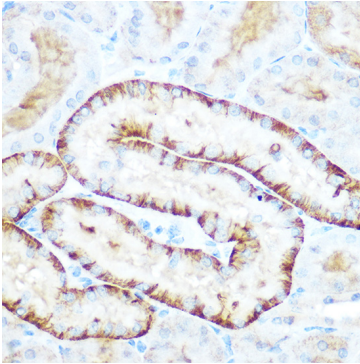
Immunofluorescence analysis of NIH-3T3 cells using PEPCK/PEPCK/PCK2 Rabbit pAb (A21529) at dilution of 1:100 (40x lens). Secondary antibody: Cy3-conjugated Goat anti-Rabbit IgG (H+L) (AS007) at 1:500 dilution. Blue: DAPI for nuclear staining.



Immunofluorescence analysis of U-2 OS cells using PEPCK/PEPCK/PCK2 Rabbit pAb (A21529) at dilution of 1:100 (40x lens). Secondary antibody: Cy3-conjugated Goat anti-Rabbit IgG (H+L) (AS007) at 1:500 dilution. Blue: DAPI for nuclear staining.



Immunohistochemistry analysis of paraffin-embedded Rat kidney using [KO Validated] PEPCK/PCK2 Rabbit pAb (A21529) at dilution of 1:100 (40x lens). Microwave antigen retrieval performed with 0.01M Tris/EDTA Buffer (pH 9.0) prior to IHC staining.



Immunohistochemistry analysis of paraffin-embedded Mouse kidney using [KO Validated] PEPCK/PCK2 Rabbit pAb (A21529) at dilution of 1:100 (40x lens). Microwave antigen retrieval performed with 0.01M Tris/EDTA Buffer (pH 9.0) prior to IHC staining.