

# SPDYA Rabbit pAb

Catalog No.: A2153

## Basic Information

### Observed MW

48kDa

### Calculated MW

36kDa

### Category

Primary antibody

### Applications

ELISA, WB

### Cross-Reactivity

Human, Mouse, Rat

## Background

Enables protein kinase activator activity and protein kinase binding activity. Involved in several processes, including G1/S transition of mitotic cell cycle; positive regulation of cell population proliferation; and positive regulation of protein kinase activity. Located in nucleoplasm.

## Recommended Dilutions

WB 1:500 - 1:2000

## Immunogen Information

### Gene ID

245711

### Swiss Prot

Q5MJ70

### Immunogen

Recombinant fusion protein containing a sequence corresponding to amino acids 1-313 of human SPDYA (NP\_877433.2).

### Synonyms

SPY1; SPDY1; RINGO3; RINGOA; SPDYA

## Contact

 | 400-999-6126

 | [cn.market@abclonal.com.cn](mailto:cn.market@abclonal.com.cn)

 | [www.abclonal.com.cn](http://www.abclonal.com.cn)

## Product Information

### Source

Rabbit

### Isotype

IgG

### Purification

Affinity purification

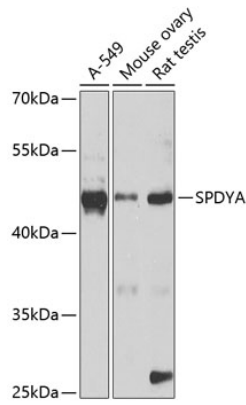
### Storage

Store at -20°C. Avoid freeze / thaw cycles.

Buffer: PBS with 0.02% sodium azide, 50% glycerol, pH 7.3.

## Validation Data

---



Western blot analysis of various lysates using SPDYA Rabbit pAb (A2153) at 1:1000 dilution.  
Secondary antibody: HRP Goat Anti-Rabbit IgG (H+L) (AS014) at 1:10000 dilution.  
Lysates/proteins: 25µg per lane.  
Blocking buffer: 3% nonfat dry milk in TBST.  
Detection: ECL Enhanced Kit (RM00021).  
Exposure time: 10s.