

# LAMTOR1 Rabbit pAb

Catalog No.: A21557 **1 Publications**

## Basic Information

### Observed MW

Refer to figures

### Calculated MW

18kDa

### Category

Primary antibody

### Applications

WB,IF/ICC,ELISA

### Cross-Reactivity

Human, Mouse

## Background

Enables GTPase binding activity. Contributes to guanyl-nucleotide exchange factor activity and molecular adaptor activity. Involved in several processes, including cholesterol homeostasis; positive regulation of TOR signaling; and regulation of cholesterol transport. Located in lysosome. Part of Ragulator complex.

## Recommended Dilutions

**WB** 1:500 - 1:2000

**IF/ICC** 1:50 - 1:200

**ELISA** Recommended starting concentration is 1 µg/mL. Please optimize the concentration based on your specific assay requirements.

## Immunogen Information

### Gene ID

55004

### Swiss Prot

Q6IAA8

### Immunogen

Recombinant protein (or fragment). This information is considered to be commercially sensitive.

### Synonyms

p18; PDRO; C11orf59; p27RF-Rho; Ragulator1; LAMTOR1

## Contact

☎ | 400-999-6126

✉ | [cn.market@abclonal.com.cn](mailto:cn.market@abclonal.com.cn)

🌐 | [www.abclonal.com.cn](http://www.abclonal.com.cn)

## Product Information

### Source

Rabbit

### Isotype

IgG

### Purification

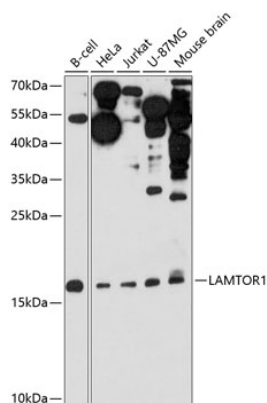
Affinity purification

### Storage

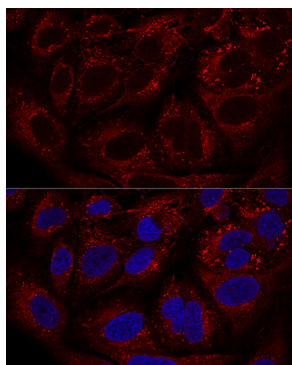
Store at -20°C. Avoid freeze / thaw cycles.

Buffer: PBS with 0.01% thimerosal, 50% glycerol, pH7.3.

## Validation Data



Western blot analysis of various lysates using LAMTOR1 Rabbit pAb (A21557) at 1:3000 dilution.  
Secondary antibody: HRP-conjugated Goat anti-Rabbit IgG (H+L) (AS014) at 1:10000 dilution.  
Lysates/proteins: 25µg per lane.  
Blocking buffer: 3% nonfat dry milk in TBST.  
Detection: ECL Enhanced Kit (RM00021).  
Exposure time: 90s.



Confocal immunofluorescence analysis of U2OS cells using LAMTOR1 Rabbit pAb (A21557) at dilution of 1:100. Blue: DAPI for nuclear staining.