

# METTL3 Rabbit pAb

Catalog No.: A21572 **1 Publications**

## Basic Information

### Observed MW

75kDa

### Calculated MW

64kDa

### Category

Primary antibody

### Applications

ELISA, WB, IHC-P, IP

### Cross-Reactivity

Human, Mouse, Rat

## Background

This gene encodes the 70 kDa subunit of MT-A which is part of N6-adenosine-methyltransferase. This enzyme is involved in the posttranscriptional methylation of internal adenosine residues in eukaryotic mRNAs, forming N6-methyladenosine.

## Recommended Dilutions

WB	1:500 - 1:1000
IHC-P	1:10 - 1:20
IHC-P	1:500 - 1:1000

## Immunogen Information

### Gene ID

56339

### Swiss Prot

Q86U44

### Immunogen

Recombinant fusion protein containing a sequence corresponding to amino acids 1-156 of human METTL3 (NP\_062826.2).

### Synonyms

M6A; IME4; Spo8; MT-A70; hMETTL3; METTL3

## Contact

	400-999-6126
	cn.market@abclonal.com.cn
	www.abclonal.com.cn

## Product Information

### Source

Rabbit

### Isotype

IgG

### Purification

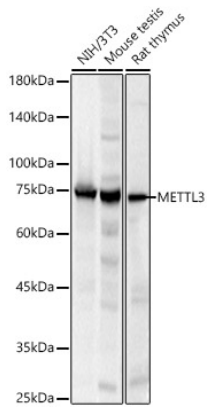
Affinity purification

### Storage

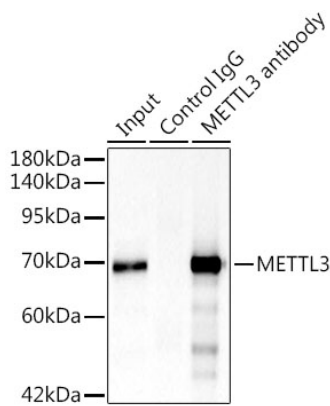
Store at -20°C. Avoid freeze / thaw cycles.

Buffer: PBS with 0.05% proclin300, 50% glycerol, pH7.3.

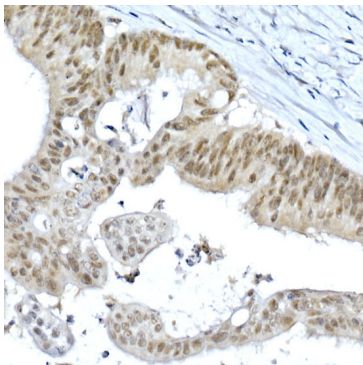
## Validation Data



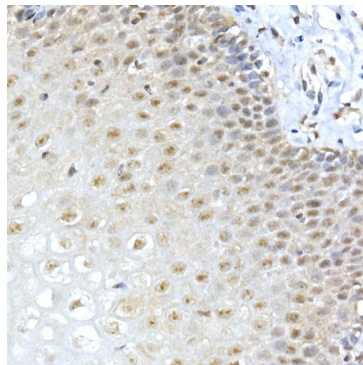
Western blot analysis of various lysates, using METTL3 Rabbit pAb (A21572) at 1:1000 dilution.  
Secondary antibody: HRP Goat Anti-Rabbit IgG (H+L) (AS014) at 1:10000 dilution.  
Lysates/proteins: 25µg per lane.  
Blocking buffer: 3% nonfat dry milk in TBST.  
Detection: ECL Basic Kit (RM00020).  
Exposure time: 20s.



Immunoprecipitation analysis of 300 µg extracts of 293T cells using 3 µg METTL3 Rabbit pAb (A21572).  
Western blot was performed from the immunoprecipitate using METTL3 Rabbit pAb (A21572) at a dilution of 1:1000.



Immunohistochemistry analysis of paraffin-embedded Human colon carcinoma using METTL3 Rabbit pAb (A21572) at dilution of 1:20 (40x lens). High pressure antigen retrieval performed with 0.01M Citrate Bufferr (pH 6.0) prior to IHC staining.



Immunohistochemistry analysis of paraffin-embedded Human esophagus using METTL3 Rabbit pAb (A21572) at dilution of 1:20 (40x lens). High pressure antigen retrieval performed with 0.01M Citrate Bufferr (pH 6.0) prior to IHC staining.