

Rad23B Rabbit pAb

Catalog No.: A21586

Basic Information

Observed MW

53kDa

Calculated MW

43kDa

Category

Primary antibody

Applications

ELISA, WB, IHC-P, IF/ICC

Cross-Reactivity

Human, Mouse

Background

The protein encoded by this gene is one of two human homologs of *Saccharomyces cerevisiae* Rad23, a protein involved in the nucleotide excision repair (NER). This protein was found to be a component of the protein complex that specifically complements the NER defect of xeroderma pigmentosum group C (XP-c) cell extracts in vitro. This protein was also shown to interact with, and elevate the nucleotide excision activity of 3-methyladenine-DNA glycosylase (MPG), which suggested a role in DNA damage recognition in base excision repair. This protein contains an N-terminal ubiquitin-like domain, which was reported to interact with 26S proteasome, and thus this protein may be involved in the ubiquitin mediated proteolytic pathway in cells. Alternative splicing results in multiple transcript variants encoding distinct isoforms.

Recommended Dilutions

WB	1:500 - 1:1000
IHC-P	1:50 - 1:200
IF/ICC	1:50 - 1:200

Immunogen Information

Gene ID

5887

Swiss Prot

P54727

Immunogen

A synthetic peptide corresponding to a sequence within amino acids 100-200 of human Rad23B (NP_002865.1).

Synonyms

P58; HR23B; HHR23B; Rad23B

Contact

	400-999-6126
	cn.market@abclonal.com.cn
	www.abclonal.com.cn

Product Information

Source

Rabbit

Isotype

IgG

Purification

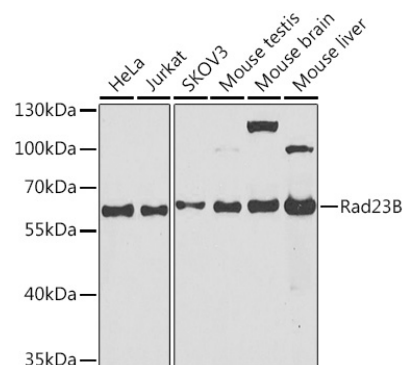
Affinity purification

Storage

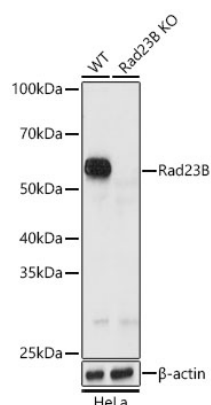
Store at -20°C. Avoid freeze / thaw cycles.

Buffer: PBS with 0.02% sodium azide, 50% glycerol, pH7.3.

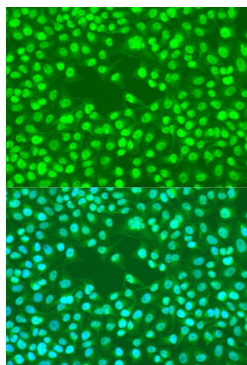
Validation Data



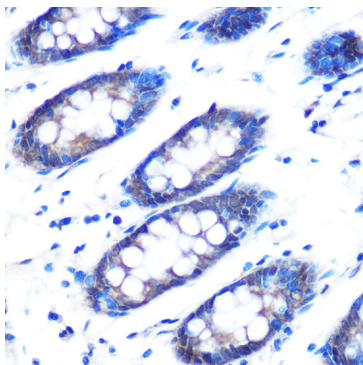
Western blot analysis of various lysates using Rad23B Rabbit pAb (A21586) at 1:1000 dilution.
Secondary antibody: HRP Goat Anti-Rabbit IgG (H+L) (AS014) at 1:10000 dilution.
Lysates/proteins: 25µg per lane.
Blocking buffer: 3% nonfat dry milk in TBST.
Detection: ECL Basic Kit (RM00020).
Exposure time: 90s.



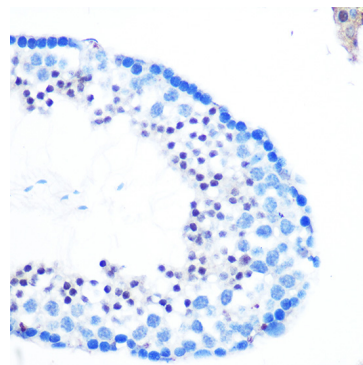
Western blot analysis of lysates from wild type (WT) and Rad23B knockout (KO) HeLa cells using Rad23B Rabbit pAb (A21586) at 1:1000 dilution.
Secondary antibody: HRP Goat Anti-Rabbit IgG (H+L) (AS014) at 1:10000 dilution.
Lysates/proteins: 25 µg per lane.
Blocking buffer: 3% nonfat dry milk in TBST.
Detection: ECL Basic Kit (RM00020).
Exposure time: 90s.



Immunofluorescence analysis of U2OS cells using Rad23B Rabbit pAb (A21586) at dilution of 1:100. Secondary antibody: Cy3 Goat Anti-Rabbit IgG (H+L) (AS007) at 1:500 dilution. Blue: DAPI for nuclear staining.



Immunohistochemistry analysis of paraffin-embedded human colon using Rad23B Rabbit pAb (A21586) at dilution of 1:100 (40x lens). Perform microwave antigen retrieval with 10 mM PBS buffer pH 7.2 before commencing with IHC staining protocol.



Immunohistochemistry analysis of paraffin-embedded mouse testis using Rad23B Rabbit pAb (A21586) at dilution of 1:100 (40x lens). Perform microwave antigen retrieval with 10 mM PBS buffer pH 7.2 before commencing with IHC staining protocol.