

# CYP1A1 Rabbit pAb

Catalog No.: A2159SP **12 Publications**

## Basic Information

### Observed MW

58 kDa

### Calculated MW

58 kDa/21 kDa/18 kDa

### Category

Primary antibody

### Applications

WB,IF-P,IHC-P,ELISA

### Cross-Reactivity

Human, Mouse, Rat

## Background

This gene, CYP1A1, encodes a member of the cytochrome P450 superfamily of enzymes. The cytochrome P450 proteins are monooxygenases which catalyze many reactions involved in drug metabolism and synthesis of cholesterol, steroids and other lipids. This protein localizes to the endoplasmic reticulum and its expression is induced by some polycyclic aromatic hydrocarbons (PAHs), some of which are found in cigarette smoke. The enzyme's endogenous substrate is unknown; however, it is able to metabolize some PAHs to carcinogenic intermediates. The gene has been associated with lung cancer risk. A related family member, CYP1A2, is located approximately 25 kb away from CYP1A1 on chromosome 15. Alternative splicing results in multiple transcript variants encoding distinct isoforms.

## Recommended Dilutions

**WB** 1:1000 - 1:3000

**IF-P** 1:100 - 1:400

**IHC-P** 1:500 - 1:2000

### ELISA

Recommended starting concentration is 1 µg/mL.

Please optimize the concentration based on your specific assay requirements. For high-ratio antibody dilutions ( $\geq 1:10000$ ) a sequential dilution method is strongly recommended to ensure measurement accuracy.

## Immunogen Information

### Gene ID

1543

### Swiss Prot

P04798

### Immunogen

This information is considered to be commercially sensitive.

### Synonyms

AHH; AHRR; CP11; CYP1; CYP1A1; P1-450; P450-C; P450DX; CYP1A1

## Product Information

### Source

Rabbit

### Isotype

IgG

### Purification

Affinity purification

### Storage

Store at -20°C. Avoid freeze / thaw cycles.

Buffer: PBS, pH 7.3, containing 50% glycerol. Preserved with Proclin300 or sodium azide.

May contain 0.05% BSA as specified on the Certificate of Analysis.

## Contact

---

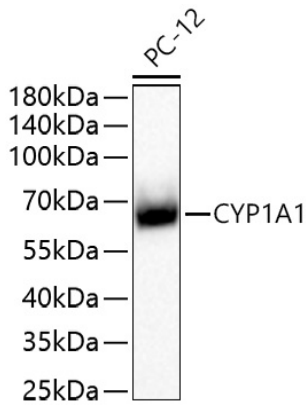
 | 400-999-6126

 | [cn.market@abclonal.com.cn](mailto:cn.market@abclonal.com.cn)

 | [www.abclonal.com.cn](http://www.abclonal.com.cn)

---

## Validation Data



Western blot analysis of lysates from PC-12 cells using CYP1A1 Rabbit pAb (A2159SP) at 1:1000 dilution incubated overnight at 4°C.

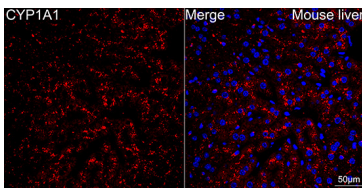
Secondary antibody: HRP-conjugated Goat anti-Rabbit IgG (H+L) (AS014) at 1:10000 dilution.

Lysates/proteins: 40 µg per lane.

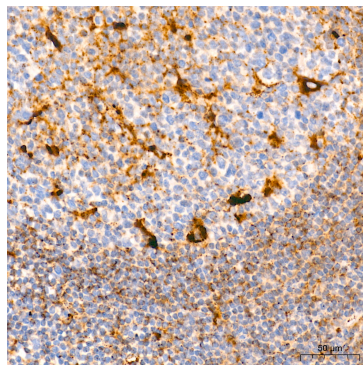
Blocking buffer: 3% nonfat dry milk in TBST.

Detection: ECL Basic Kit (RM00020).

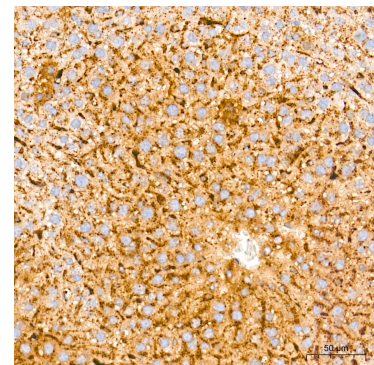
Exposure time: 60 s.



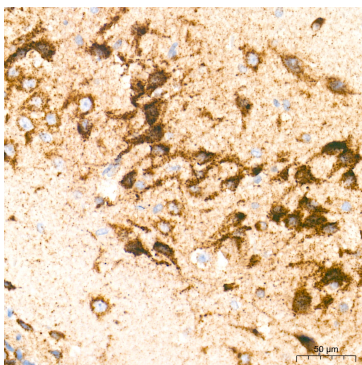
Confocal imaging of paraffin-embedded Mouse liver tissue using CYP1A1 Rabbit pAb (A2159SP, dilution 1:200) followed by a further incubation with Cy3-conjugated Goat anti-Rabbit IgG (H+L) (AS007, dilution 1:500) (Red). DAPI was used for nuclear staining (Blue). High pressure antigen retrieval performed with 0.01M Citrate Buffer (pH 6.0) prior to IF staining. Objective: 40x.



Immunohistochemistry analysis of paraffin-embedded Human tonsil tissue using CYP1A1 Rabbit pAb (A2159SP) at a dilution of 1:600 (40x lens). High pressure antigen retrieval performed with 0.01M Tris-EDTA Buffer (pH 9.0) prior to IHC staining.



Immunohistochemistry analysis of paraffin-embedded Mouse liver tissue using CYP1A1 Rabbit pAb (A2159SP) at a dilution of 1:600 (40x lens). High pressure antigen retrieval performed with 0.01M Tris-EDTA Buffer (pH 9.0) prior to IHC staining.



Immunohistochemistry analysis of paraffin-embedded Rat brain tissue using CYP1A1 Rabbit pAb (A2159SP) at a dilution of 1:600 (40x lens). High pressure antigen retrieval performed with 0.01M Tris-EDTA Buffer (pH 9.0) prior to IHC staining.